
SERVICE INFORMATION**BOOTH EQUIPMENT**

Each 10' x 10' booth will be set up with 8' high blue and white back drape, 36" high blue side dividers, and a 7" x 44" one-line identification sign.

EXHIBIT HALL CARPET

The exhibit hall is NOT carpeted; however, the aisles will be carpeted in blue.

DISCOUNT PRICE DEADLINE DATE

Take advantage of discount pricing by ordering online at www.freemanco.com/store by January 11, 2012.

Save money by ordering services and labor in advance. All services including display and rigging labor orders placed at show site will be charged an additional 30% above the advance rate.

SHOW SCHEDULE**EXHIBITOR MOVE-IN**

Individual exhibitor move-in and move out schedule will be distributed closer to the show dates.

EXHIBIT HOURS

Thursday	January 26, 2012	12:00 PM - 9:00 PM
Friday	January 27, 2012	12:00 PM - 9:00 PM
Saturday	January 28, 2012	10:00 AM - 9:00 PM
Sunday	January 29, 2012	10:00 AM - 6:00 PM

EXHIBITOR MOVE-OUT

For more information and helpful hints on post-show procedures and move-out, please go to www.freemanco.com/postshowFAQ

Sunday	January 29, 2012	6:00 PM - 11:45 PM
Monday	January 30, 2012	6:00 AM - 3:00 PM

We will begin returning empty containers once aisle carpet is removed.

DISMANTLE AND MOVE-OUT INFORMATION

All exhibitor materials must be removed from the exhibit facility by Sunday, January 29, 2012 at 11:45 PM.

To ensure all exhibitor materials are removed from the exhibit facility by the Exhibitor Move-Out deadline, please have all carriers check-in by Monday, January 30, 2012 at 12:00 PM.

POST SHOW PAPERWORK AND LABELS

Our Exhibitor Services Department will gladly prepare your outbound Material Handling Agreement and labels in advance. Be sure your carrier knows the company name and booth number when making arrangements for shipping your exhibit at the close of the show.

SERVICE CONTRACTOR CONTACTS / INFORMATION:

FREEMAN

3323 I H 35 North, Ste 120
 San Antonio, TX 78219
 (210) 227-0341 fax (469) 621-5611
 FreemanSanAntonioES@freemanco.com

FREEMAN EXHIBIT TRANSPORTATION

(800) 995-3579 Toll Free US & Canada, (817) 607-5100 Local & International, (469) 621-5810 Fax

SHIPPING INFORMATION

Warehouse Shipping Address:

Exhibiting Company Name / Booth # _____

SAN ANTONIO BOAT AND RV SHOW

C/O FREEMAN

3323 IH 35 NORTH, STE 126

SAN ANTONIO, TX 78219

Freeman will accept crated, boxed or skidded materials beginning Thursday, December 22, 2011, at the above address. Material arriving after January 18, 2012 will be received at the warehouse with an additional after deadline charge. Warehouse materials are accepted at the warehouse Monday through Friday between the hours of 8:00 AM - 3:30 PM.

Show Site Shipping Address:

Exhibiting Company Name / Booth # _____

SAN ANTONIO BOAT AND RV SHOW

C/O FREEMAN

ALAMODOME

100 MONTANA ST, STE 101

SAN ANTONIO, TX 78203

Freeman will receive shipments at the exhibit facility beginning Wednesday, January 25, 2012. Shipments arriving before this date may be refused by the facility. Any charges incurred for early freight accepted by the facility are the responsibility of the Exhibitor.

Please note: All items and materials that must be brought into the facility may be subject to Material Handling Charges and are the responsibility of the Exhibitor. This also applies to items not ordered through the Official Show Vendors.

LABOR INFORMATION

Booth Installation & Dismantle: If utilizing Freeman labor, please refer to the Installation & Dismantle order form to place your order for display labor. Straight time and Overtime hours are also listed on the order form. Exhibitors supervising Freeman labor will need to pick up and release their labor at the Service Desk.

ASSISTANCE

We want you to have a successful show. If we can be of assistance, please call our Exhibitor Services Department at (210) 227-0341.

WE APPRECIATE YOUR BUSINESS!

FREEMAN GENERAL INFORMATION

TRANSLATION SERVICES

Freeman is pleased to offer a new service for our international exhibitors that provides quick interpretation and translation in 150 languages. This service will not only interpret for us on a three way conversation, but also translate emails from customers. To access this feature you may contact Freeman Exhibitor Services at (210) 227-0341 or Freeman's Customer Support Center at (888) 508-5054 Toll Free US & Canada or (817) 607-5000 Local & International.

HELPFUL HINTS

SAVE MONEY

Order early to take advantage of advance order discount rates, place your order by January 11, 2012.

AVOID DELAY

Ship early to avoid delays. Shipments arriving late at show site will cost you money, time and business!

SAFETY TIPS

Use a ladder, not a chair. Standing on chairs, tables and other rental furniture is unsafe and can cause injury to you or to others. These objects are not designed to support your standing weight.

Be aware of your surroundings. You are in an active work area with changing conditions during move-in and move-out. Pay attention. Look for obstacles, machinery and equipment that are in use.

Keep your eyes open for scooters and forklifts. The drivers of these vehicles may not be able to see you.

Stay clear of dock areas, trucks and trailers. These areas can be particularly dangerous.

Prevent electrical shocks, falling items and damage to materials. Do not attach items or equipment to the drapes or metal framework provided for your booth. This can cause serious injury or damage to materials.

We discourage children from being in the exhibit hall during installation and dismantle. If children are present during installation and dismantle, they must be supervised by an adult at all times.

Freeman does not ship or handle Hazardous Materials. If any materials you are shipping to the event fall into this category, please contact Freeman to be sure the material will be allowed at the facility and by the association. In addition, if authorized by the facility and the association, you will need to make separate arrangements for the transport and handling of the approved materials, since Freeman will not transport or handle them.

The operation or use of all motorized lifts and motorized material handling equipment for installation/dismantle of exhibits is NOT permitted by exhibitors or by their exhibitor appointed contractors (EAC's). Thank you for your cooperation.

EXHIBITOR ASSISTANCE

For more information and helpful hints on pre-show procedures and move-in, please go to www.freemanco.com/preshowFAQ.

For more information and helpful hints on post-show procedures and move-out, please go to www.freemanco.com/postshowFAQ.

Call Freeman's Exhibitor Services department at (210) 227-0341 with any questions or needs you may have.

FREEMAN GENERAL INFORMATION

TRANSLATION SERVICES

Freeman is pleased to offer a new service for our international exhibitors that provides quick interpretation and translation in 150 languages. This service will not only interpret for us on a three way conversation, but also translate emails from customers. To access this feature you may contact Freeman Exhibitor Services at (210) 227-0341 or Freeman's Customer Support Center at (888) 508-5054 Toll Free US & Canada or (817) 607-5000 Local & International.

HELPFUL HINTS

SAVE MONEY

Order early to take advantage of advance order discount rates, place your order by January 11, 2012.

AVOID DELAY

Ship early to avoid delays. Shipments arriving late at show site will cost you money, time and business!

SAFETY TIPS

Use a ladder, not a chair. Standing on chairs, tables and other rental furniture is unsafe and can cause injury to you or to others. These objects are not designed to support your standing weight.

Be aware of your surroundings. You are in an active work area with changing conditions during move-in and move-out. Pay attention. Look for obstacles, machinery and equipment that are in use.

Keep your eyes open for scooters and forklifts. The drivers of these vehicles may not be able to see you.

Stay clear of dock areas, trucks and trailers. These areas can be particularly dangerous.

Prevent electrical shocks, falling items and damage to materials. Do not attach items or equipment to the drapes or metal framework provided for your booth. This can cause serious injury or damage to materials.

We discourage children from being in the exhibit hall during installation and dismantle. If children are present during installation and dismantle, they must be supervised by an adult at all times.

Freeman does not ship or handle Hazardous Materials. If any materials you are shipping to the event fall into this category, please contact Freeman to be sure the material will be allowed at the facility and by the association. In addition, if authorized by the facility and the association, you will need to make separate arrangements for the transport and handling of the approved materials, since Freeman will not transport or handle them.

The operation or use of all motorized lifts and motorized material handling equipment for installation/dismantle of exhibits is NOT permitted by exhibitors or by their exhibitor appointed contractors (EAC's). Thank you for your cooperation.

EXHIBITOR ASSISTANCE

For more information and helpful hints on pre-show procedures and move-in, please go to www.freemanco.com/preshowFAQ.

For more information and helpful hints on post-show procedures and move-out, please go to www.freemanco.com/postshowFAQ.

Call Freeman's Exhibitor Services department at (210) 227-0341 with any questions or needs you may have.

F R E E M A N

3323 I H 35 North, Ste 120
 San Antonio, TX 78219
 (210) 227-0341 Fax: (469) 621-5611
 FreemanSanAntonioES@freemanco.com

DISCOUNT PRICE
 DEADLINE DATE
 JANUARY 11, 2012

INCLUDE THIS FORM
 WITH YOUR ORDER

NAME OF SHOW: **SAN ANTONIO BOAT AND RV SHOW / JANUARY 26-29, 2012**

COMPANY NAME: _____ BOOTH #: _____

ADDRESS: _____ BOOTH SIZE : _____ X

CITY/STATE/ZIP: _____

PHONE: _____ EXT.: _____ FAX #: _____

SIGNATURE: _____ PRINT NAME: _____

CONTACT'S E-MAIL: _____

E-MAIL FOR INVOICE: _____ Check if you are a new Freeman customer

Invoices will be sent by e-mail; please provide e-mail address of the person who reconciles your invoices if different than contact's email.

METHOD OF PAYMENT

BY SUBMITTING THIS FORM OR ORDERING MATERIALS OR SERVICES FROM FREEMAN, YOU AGREE TO BE BOUND BY ALL TERMS & CONDITIONS INCLUDED IN YOUR SERVICE MANUAL.

COMPANY CHECK
 Please make check payable to: Freeman
 Checks must be in U.S. funds drawn on a U.S. or Canadian bank ("U.S. FUNDS" MUST BE PRE-PRINTED on Canadian checks.)
Please reference (282113) on your remittance.

CREDIT CARD
 For your convenience, we will use this authorization to charge your credit card account for your advance orders, and any additional amounts incurred as a result of show site orders placed by your representative. These charges may include all Freeman companies, or any charges which Freeman may be obligated to pay on behalf of Exhibitor, including without limitation, any shipping charges. Please complete the information requested below:

AMERICAN EXPRESS **MASTER CARD** **VISA**

BANK TRANSFER
 Bank transfer to Bank of America, N.A.; Dallas, TX
Wire Transfer
 ABA#: 026009593 ACCT 1252039192 Freeman
International Wire Transfer
 Swift Code: BOFAUS3N ACCT# 1252039192 Freeman
ACH Direct Deposit
 ABA#:111000012 ACCT# 1252039192 Freeman
Please reference Name of Show & Booth Number so we can properly credit your account.
Note: Customers are responsible for any bank processing fees.

ACCOUNT NO.: _____ EXP. DATE: _____

CARDHOLDER NAME (PRINT): _____ SIGNATURE: _____

CARDHOLDER BILLING ADDRESS: _____

CITY/STATE/ZIP: _____

ENTER TOTALS HERE

FURNISHINGS & ACCESSORIES	CARPET	CLEANING/ SHAMPOOING	PORTER SERVICE	RENTAL EXHIBITS & ACCESSORIES	SIGNS	INSTALLATION LABOR	DISMANTLE LABOR
MATERIAL HANDLING	RIGGING INSTALLATION	RIGGING DISMANTLE	EXHIBIT TRANSPORTATION	HANGING SIGNS	GRAND TOTAL		

- Remember to order in advance to save time and money. You may place your order by phone, fax, mail, or use our online ordering service at: www.freemanco.com/store.
- Orders received without payment or after the discount price deadline date will be charged at the standard price.
- Copies of invoices may be picked up from the Service Desk prior to show closing.
- If you have questions or need assistance with any items not listed, please call and ask for your Exhibitor Services Representative.

TELL US WHAT YOU THINK

Freeman is committed to providing great customer service. To help us serve you more effectively in the future, please visit the URL address below upon the completion of your show to provide feedback. Your input will provide the insight needed to ensure that our customer service is in line with your expectations.
<http://feedback.freemanco.com/?282113>

FREEMAN method of payment

F R E E M A N

3323 I H 35 North, Ste 120
San Antonio, TX 78219
(210) 227-0341 Fax: (469) 621-5611
FreemanSanAntonioES@freemanco.com

SAN ANTONIO BOAT AND RV SHOW / JANUARY 26-29, 2012

In order to authorize Freeman to invoice a third party for payment of services rendered to exhibitors, both the exhibiting company and the third party must complete this form and return it at least 14 days prior to show move-in.

EXHIBITING COMPANY AUTHORIZATION OF THIRD PARTY BILLING

"We understand and agree that we, the exhibiting company, are ultimately responsible for payment of charges and agree by submitting this form or ordering materials or services from Freeman, to be bound by all terms and conditions as described in the Terms & Conditions section of this service manual. In the event that the named third party does not discharge payment of the invoice prior to the last day of the show, charges will revert back to the exhibiting company. All invoices are due and payable upon receipt, by either party. The items checked below are to be invoiced to the third party."

BY SUBMITTING THIS FORM OR ORDERING MATERIALS OR SERVICES FROM FREEMAN, YOU AGREE TO BE BOUND BY ALL TERMS & CONDITIONS INCLUDED IN YOUR SERVICE MANUAL.

EXHIBITOR NAME: (PLEASE PRINT)

EXHIBITOR SIGNATURE:

DATE:

EXHIBITING COMPANY INFORMATION

EXHIBITING COMPANY NAME:

BOOTH #:

EXHIBITING COMPANY ADDRESS:

CITY/STATE/ZIP:

PHONE:

EXT:

FAX:

CONTACT'S E-MAIL:

Indicate which services are to be invoiced to the Third Party:

- | | |
|---|---|
| <input type="checkbox"/> ALL FREEMAN SERVICES | <input type="checkbox"/> FREEMAN EXHIBIT TRANSPORTATION |
| <input type="checkbox"/> I&D LABOR/SUPERVISION | <input type="checkbox"/> RENTAL FURNITURE/CARPET/SIGNS |
| <input type="checkbox"/> MATERIAL HANDLING/IN & OUT | <input type="checkbox"/> BOOTH CLEANING |
| | <input type="checkbox"/> OTHER _____ |

THIRD PARTY COMPANY INFORMATION

THIRD PARTY COMPANY NAME:

CONTACT NAME:

THIRD PARTY BILLING ADDRESS:

CITY/STATE/ZIP:

PHONE:

EXT:

FAX:

CONTACT'S E-MAIL:

E-MAIL FOR INVOICE:

Invoices will be sent by e-mail; please provide the e-mail address of the person who reconciles your invoices if different than contact's e-mail.

THIRD PARTY CREDIT CARD AUTHORIZATION

- AMERICAN EXPRESS MASTERCARD VISA

CREDIT CARD ACCOUNT NO:

EXP. DATE:

CARDHOLDER NAME (PLEASE PRINT):

CARD TYPE:

AUTHORIZED SIGNATURE:

CARDHOLDER BILLING ADDRESS:

CITY/STATE/ZIP:

05/10 (282113)

FREEMAN third party authorization

FURNISHING essentials



Your exhibit space should reflect your company's distinctive look and feel, which is why the furniture you choose to fill it is so important. Freeman Furnishing Essentials has everything you need, with an assortment of superior, professional pieces in eye-catching shapes and styles to suit any budget or design essential. In addition, the quality control standards and in-house maintenance that Freeman adheres to are outstanding, so you always know you're getting the best furniture possible to make your show experience a total success.

Browse through this brochure, and if you don't find what you want, don't worry. We will work with you every step of the way to make sure you get exactly what you're looking for. Our prices are all-inclusive and cover shipping and material handling, with no hidden fees. Also, Freeman has multiple warehouse locations across the country, so delivering your furniture solution is always quick and simple.

seating

When it comes to basic seating needs, look no further than Freeman. Our wide array of well-designed modern chairs, armchairs and stools will serve your show space requirements.

diva series

Natural blonde wood and matte chrome finish highlight this sleek Italian design.

diva counter stool

17"W 16"L 36"H – N71092
The intermediate 25" seating height makes this stool ideal for theater or demo areas.

diva chair

18"W 16"L 31"H – N71091
A natural complement to modern exhibit designs.



santana armchair

24"W 20"L 31"H – N710102
Modern styling with ergonomic shape; as striking as it is comfortable.

forestdale chair

21"W 21"L 31"H – N71085
Padded seat and back in distinct geometric fabric with a sturdy lightweight frame.



director stool

17"W 24"L 45"H – N710142

director chair

17"W 24"L 32"H – N71042

custom imprinting

Ask us about custom logo imprinting on the Director Chair or Stool back fabric. – N710998



Royal Blue



Black



Bright Green



Yellow



Orange



Red



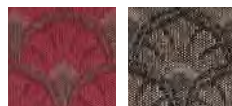
Purple



Bright Blue

cherry barrel chair

Cranberry or Taupe
23"W 22"L 29"H – N71038
Traditional style in a cherry finish with classic fabric pattern options.



diplomat chair

Black Diamond Fabric
25"W 28"L 36"H – N710144
Comfortable, yet compact for office or conference table seating.



gray gaslift stool

24"W 20"L 46"H
With Arms – N71048
No Arms – N71047

gray gaslift chair

26"W 20"L 38"H
With Arms – N71046
No Arms – N71045

Telescoping height
adjustment; five-caster
base rolls with ease.

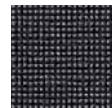


executive chair

Black Tweed
28"W 25"L 45"H – N71044

bugle base chair

Black or Blue Tweed
21"W 20"L 32"H – N71041



Bugle Base Table (page 8)



black diamond side chair
21"W 23"L 32"H – N71089

black diamond stool
22"W 18"L 46"H – N71088

black diamond armchair
20"W 21"L 33"H – N71090



Soho Bistro Table (page 8)

limerick® chair

By Herman Miller

Gray

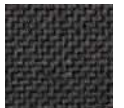
18"W 18"L 33"H – C210108



casey padded stool

Black or Gray Fabric

20"W 21.5"L 42.5"H – C210112





lounge seating

Give your exhibit a casual yet practical look with Freeman superior lounge seating. Pick from a large selection of sofas, loveseats, chairs and barstools that are sure to take your exhibit design to the next level.



signature loveseat

Black

33"W 60"L 33"H – N73091

Deeply comfortable sofa-style seating in a sleek, contemporary shape.

signature chair

Black

33"W 35"L 33"H – N71093



kennedy sectional series

Blue or Black Tweed

Flexible sofa-style seating in a variety of configurations.

sofa, three-piece

31"W 87"L 28"H – N730313

loveseat, two-piece

31"W 62"L 28"H – N730213

corner section

31"W 31"L 28"H – N73013

center section

31"W 25"L 28"H – N73014





glass conference table

Black or Chrome Pedestal
42"W 42"L 30"H – N72015
Rounded square glass top is supported by stylish metal frame in a choice of two colors.



cherry cocktail table

19"W 36"L 17"H – N72026

cherry end table

20"W 20"L 20"H – N72027

tables

What Freeman always brings to the table is professionalism, and nothing says more about your meeting space and/or show site than your surfaces and tabletops. Choose from modern glass conference tables, traditional cocktail, end tables and much more.



metro series

Black

slate end table

20"W 20"L 17"H – N72029

slate cocktail table

20"W 40"L 15"H – N72028



pedestal tables

A range of tabletop sizes and materials with pedestals in various heights to fit any space.

soho series

Black-Top Mini	18"H x 18"W	N72066
Black-Top Cafe	30"H x 24"W	N72069
Black-Top Bistro	42"H x 24"W	N72070
Black-Top Cafe	30"H x 36"W	N72067
Black-Top Bistro	42"H x 36"W	N72068

chelsea series

Butcher Block-Top Cafe	30"H x 30"W	N72063
	30"H x 36"W	N72064
Butcher Block-Top Bistro	42"H x 30"W	N720163
	42"H x 36"W	N720164



studio series

black end table

17"W 17"L 18"H – C115104

black cocktail table

36"W 20"L 15"H – C115103

bugle base table

White

36"W 27"H – N72065



office furniture

When it's time to set up office, Freeman offers a wide selection of superior, professional pieces in eye-catching shapes and styles to suit any budget and/or design essential. From classic credenzas and bookcases to professional seating, we've got all your office furniture requirements.



milano table

42"W 84"L 29"H

Blonde Top with Black Base – N72093

Black Top with Black Base – N72092

The latest seven-foot conference table by Freeman features clean curved lines and a wealth of work space.



luna table

36"W 72"L 29"H

Black Top with Black Base – N72094

This contemporary six-foot conference table or writing desk comes with a black laminate top.



Cherry Tables (page 7)
Cherry Barrel Chairs (page 2)
Black Table Lamp (page 14)



hemingway writing table

Black

24"W 49"L 29"H – N720191

office series

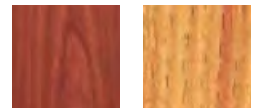
Cherry or Oak

five-foot desk

30"W 60"L 30"H

Cherry – N74061

Oak – N74071



credenza

16"W 60"L 30"H

Cherry – N74064

Oak – N74074

bookcase

12"W 36"L 72"H

Cherry – N74065

Oak – N74075



display



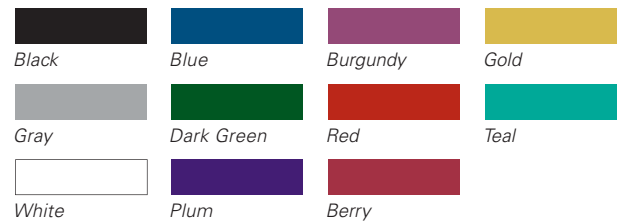
Some of the most essential elements of your exhibit are the surfaces on which you display your show materials. That's why we have an appealing variety of displays, from standing cylinders to sleek computer desks to draped tables and counters, to ensure your show space will be both attractive and interactive.



draped or undraped tables & counters

Colored draping includes white vinyl top and pleated skirt on three sides. Fourth-side draping is available. Undraped tables include white vinyl tops.

	3'	4'	6'	8'
tables (30" height)				
Draped	C130330	C130430	C130630	C130830
Draped on fourth side			C12404630	C12404830
Undraped	C131330	C131430	C131630	C131830
counters (42" height)				
Draped	C130342	C130442	C130642	C130842
Draped on fourth side			C12404642	C12404842
Undraped	C131342	C131442	C131642	C131842



Tabletop risers are also available in a variety of sizes. See order form for details.



display cubes

Black

12" small

12"W 12"L 42"H – N75030

18" medium

18"W 18"L 36"H – N75031

24" large

24"W 24"L 42"H – N75032



display cylinders

Black

low

30"W 15"H – N75020

medium

18"W 20"H – N75021

high

24"W 36"H – N75022



orion computer kiosk

Black

28"L 28"D 40.5"H – N75079

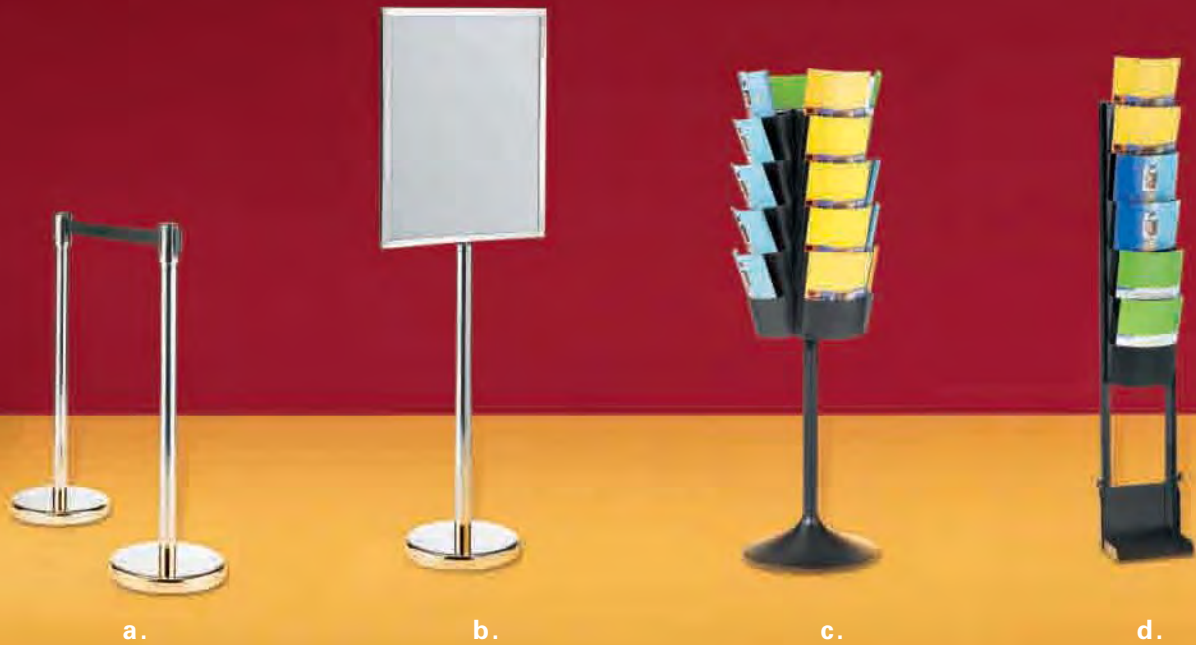
Pedestal for computer demo with keyboard tray and interior storage. (Computer not included.)



display counter

Black

24"W 49"L 42"H – N72056



accessories

We know that every exhibit is different and requires certain pieces that may be hard to find. That's why we offer an assortment of accessories that will meet your needs, from literature racks to bulletin boards to refrigerators and file cabinets. No matter the requirement, your exhibit will always stand out with these striking and functional pieces.

a. chrome stanchion with 8' retractable belt

42"H – C220121

b. chrome sign holder

Holds 22"x 28" sign – C220118

c. round literature rack

17"W 17"L 57"H – N750135

Revolving black display holds printed materials for easy access from 20 pockets.

d. flat literature rack

10"W 55"H – N750136

Forward-facing black display presents printed materials in six pockets.

e. chrome coat tree

C220109

f. chrome easel

C220134

g. chrome bag rack

C220110

h. contempo trash receptacle

8"W 24"H

Black – N75053

Aluminum – N75054

wastebasket

Wastebasket color may vary.

C220107





e.



f.



g.



h.

small refrigerator*

19"W 19"L 34"H – N75057



file cabinet with lock

Standard Size

two-drawer

15"W 29"L 28"H – N74082

four-drawer

15"W 29"L 50"H – N74081



table lamp*

Black

25"H – N75052



**floor-standing
bulletin board**

48"W 96"L 78"H – C10201484

*Note: Electrical power must be ordered separately.
For ideas on furniture pairings, go to www.freemanco.com/furniturepairing

F R E E M A N

FREEMAN

3323 IH 35 North, Ste 120
 San Antonio, TX 78219
 (210) 227-0341 Fax: (469) 621-5611
 FreemanSanAntonioES@freemanco.com

DISCOUNT PRICE
 DEADLINE DATE
 JANUARY 11, 2012

INCLUDE THE FREEMAN METHOD OF
 PAYMENT FORM WITH YOUR ORDER

NAME OF SHOW: **SAN ANTONIO BOAT AND RV SHOW / JANUARY 26-29, 2012**

COMPANY NAME: _____ BOOTH #: _____ BOOTH SIZE: **X**

CONTACT NAME : _____ PHONE #: _____

E-MAIL ADDRESS : _____

For Assistance, please call (210) 227-0341 to speak with one of our experts.

For fast, easy ordering, go to www.freemanco.com/store

FURNISHINGS

Qty	Part #	Description	Discount Price	Standard Price	Total
CHAIRS Pages 1 & 2					
___	N71092	Diva Counter Stool	145.60	189.30	___
___	N71091	Diva Chair.....	123.80	160.95	___
___	N710102	Santana Chair	113.10	147.05	___
___	N71085	Forestdale Chair	58.00	75.40	___
___	N710144	Diplomat Chair	158.10	205.55	___
___	N71038	Cherry Barrel Chair	136.75	177.80	___
		<input type="checkbox"/> Cranberry <input type="checkbox"/> Taupe			

Director Series							
<input type="checkbox"/>	Black	<input type="checkbox"/>	Blue	<input type="checkbox"/>	Bright Green	<input type="checkbox"/>	Orange
<input type="checkbox"/>	Purple	<input type="checkbox"/>	Red	<input type="checkbox"/>	Royal Blue	<input type="checkbox"/>	Yellow

___	N710142	Director Stool	96.05	124.85	___
___	N71042	Director Chair	82.25	106.95	___
___	N710998	Custom Imprinting/Director		Call for Quote	___

Pages 3 & 4

___	N71048	Gray Gaslift Stool w/Arms	157.60	204.90	___
___	N71047	Gray Gaslift Stool	157.60	204.90	___
___	N71046	Gray Gaslift Chair w/Arms	146.30	190.20	___
___	N71045	Gray Gaslift Chair	146.30	190.20	___
___	N71044	Executive Chair	169.15	219.90	___
___	N71041	Bugle Base Chair	103.00	133.90	___
		<input type="checkbox"/> Black Tweed <input type="checkbox"/> Blue Tweed			
___	N71088	Black Diamond Stool	84.40	109.70	___
___	N71089	Black Diamond Side Chair ..	70.40	91.50	___
___	N71090	Black Diamond Arm Chair....	91.70	119.20	___
___	C210108	Limerick® Chair by Herman Miller.....	47.50	59.50	___
___	C210112	Casey Padded Stool.....	75.50	94.25	___
		<input type="checkbox"/> Black <input type="checkbox"/> Gray			

LOUNGE SEATING

Pages 5 & 6

___	N73091	Signature Loveseat	407.95	530.35	___
___	N71093	Signature Chair	280.80	365.05	___

Kennedy Sectional Series					
<input type="checkbox"/>	Black Tweed	<input type="checkbox"/>	Blue Tweed		

___	N730313	Kennedy Sofa - 3 piece	461.10	599.45	___
___	N730213	Kennedy Loveseat - 2 piece	307.45	399.70	___
___	N73013	Kennedy Corner Section ...	153.60	199.70	___
___	N73014	Kennedy Center Section ...	153.60	199.70	___

Qty	Part #	Description	Discount Price	Standard Price	Total
TABLES Pages 7 & 8					
___	N72026	Cherry Cocktail Table	125.55	163.20	___
___	N72027	Cherry End Table	103.50	134.55	___
___	N72028	Metro Slate Cocktail Table	110.85	144.10	___
___	N72029	Metro Slate End Table	81.25	105.65	___
___	C115103	Studio Black Cocktail Table	81.25	105.65	___
___	C115104	Studio Black End Table	59.10	76.85	___
___	N72015	Glass Conference Table	133.00	172.90	___
		<input type="checkbox"/> Black <input type="checkbox"/> Chrome			
___	N72065	Bugle Base Table/White	155.20	201.75	___

Pedestal Tables - SoHo Series					
___	N72066	Black-top Mini 18"W x 18"H	N/A	N/A	___
___	N72069	Black-top Cafe 24"W x 30"H ...	126.75	164.80	___
___	N72070	Black-top Bistro 24"W x 42"H ..	126.75	164.80	___
___	N72067	Black-top Café Table 36"x30"	121.30	157.70	___
___	N72068	Black-top Bistro 36"W x 42"H ..	121.30	157.70	___

Pedestal Tables - Chelsea Series - Butcher Block Top					
___	N72063	Café Table 30"W x 30"H	116.75	151.80	___
___	N72064	Café Table 36"W x 30"H	116.75	151.80	___
___	N720163	Bistro Table 30"W x 42"H	116.75	151.80	___
___	N720164	Bistro Table 36"W x 42"H	116.75	151.80	___

OFFICE FURNITURE

Pages 9 & 10

___	N72093	Milano Table/Blonde Top	263.80	342.95	___
___	N72092	Milano Table/Black Top	263.80	342.95	___
___	N72094	Luna Table/Black Top	411.55	535.00	___
___	N720191	Hemingway Writing Table	230.50	299.65	___
___	N74061	Cherry Desk 5'	386.80	502.85	___
___	N74065	Cherry Bookcase	129.15	167.90	___
___	N74064	Cherry Credenza	297.55	386.80	___
___	N74071	Oak Desk 5'	350.20	455.25	___
___	N74075	Oak Bookcase	119.80	155.75	___
___	N74074	Oak Credenza	274.90	357.35	___

OFFICE FURNITURE

Pages 11 & 12

___	N72056	Display Counter	230.50	299.65	___
___	N75079	Orion Computer Kiosk	273.45	355.50	___
___	N75030	Black Display Cube/Small	145.60	189.30	___
___	N75031	Black Display Cube/Medium ...	158.30	205.80	___
___	N75032	Black Display/Large	183.60	238.70	___

NAME OF SHOW: **SAN ANTONIO BOAT AND RV SHOW / JANUARY 26-29, 2012**

COMPANY NAME: _____ BOOTH: _____ BOOTH SIZE: **X**

CONTACT NAME : _____ PHONE #: _____

E-MAIL ADDRESS : _____

For Assistance, please call (210) 227-0341 to speak with one of our experts.

For fast, easy ordering, go to www.freemanco.com/store

FURNISHINGS

DISPLAY FURNITURE
Pages 11 & 12 (continued)

Qty	Part #	Description	Discount Price	Standard Price	Total
Display Cylinders					
___	N75020	Black Display Cylinder/Low ...	106.35	138.25	___
___	N75021	Black Display Cylinder/Med	112.35	146.05	___
___	N75022	Black Display Cylinder/High....	122.55	159.30	___

Draped Tables - Tables are 30" wide
 Black Blue Burgundy Dark Green Gold
 Gray Plum Red Teal White

___	C130330	Draped Table 3'L x 30"H	68.00	88.40	___
___	C130430	Draped Table 4'L x 30"H	87.00	105.75	___
___	C130630	Draped Table 6'L x 30"H	106.00	128.00	___
___	C130830	Draped Table 8'L x 30"H	123.00	148.50	___
___	C12404630	4th Side Drap 6'L x 30"H ..	40.25	50.00	___
___	C12404830	4th Side Drap 8'L x 30"H .	40.25	50.00	___
___	C130342	Draped Counter 3'L x 42"H ...	100.50	130.65	___
___	C130442	Draped Counter 4'L x 42"H ...	117.75	147.25	___
___	C130642	Draped Counter 6'L x 42"H ...	133.50	166.50	___
___	C130842	Draped Counter 8'L x 42"H ...	153.25	192.00	___
___	C12404642	4th Side Drap 6'L x 42"H ..	40.25	50.00	___
___	C12404842	4th Side Drap 8'L x 42"H ..	40.25	50.00	___

Undraped Tables - Tables are 30" wide

___	C131330	Undraped Table 3'L x 30"H .	28.05	36.45	___
___	C131430	Undraped Table 4'L x 30"H .	51.00	63.25	___
___	C131630	Undraped Table 6'L x 30"H.	62.75	78.50	___
___	C131830	Undraped Table 8'L x 30"H .	74.75	92.25	___
___	C131342	Undraped Counter 3'Lx42"H	43.80	56.95	___
___	C131442	Undraped Counter 4'Lx42"H	72.25	88.00	___
___	C131642	Undraped Counter 6'Lx42"H	83.50	103.50	___
___	C131842	Undraped Counter 8'Lx42"H	90.25	113.00	___

Table Top Risers

___	C150410	Single Step Riser 4'L x 7"H	32.55	42.30	___
___	C150610	Single Step Riser 6'L x 7"H	50.25	65.35	___
___	C150810	Single Step Riser 8'L x 7"H	63.60	82.70	___
___	C150414	Single Step Riser 4'L x14"H	32.55	42.30	___
___	C150614	Single Step Riser 6'L x14"H	50.25	65.35	___
___	C150814	Single Step Riser 8'L x14"H	63.60	82.70	___
___	C150420	Double Step Riser 4'L	63.60	82.70	___
___	C150620	Double Step Riser 6'L	96.05	124.85	___
___	C150820	Double Step Riser 8'L	125.55	163.20	___

ACCESSORIES
Pages 13 & 14

Qty	Part #	Description	Discount Price	Standard Price	Total
___	C220121	Chrome Stanchion w/belt	78.85	102.50	___
___	C220118	Chrome Sign Holder	56.20	73.05	___
___	N750135	Round Literature Rack	132.95	172.85	___
___	N750136	Flat Literature Rack	113.95	148.15	___
___	C220109	Chrome Coat Tree	29.50	38.35	___
___	C220134	Chrome Easel	28.75	35.75	___
___	C220110	Chrome Bag Rack	48.75	63.40	___
___	N75053	Black Trash Receptacle	N/A	N/A	___
___	N75054	Aluminum Trash Receptacle .	46.55	60.50	___
___	220107	Wastebasket	15.25	18.00	___
___	220106	Corrugated Wastebasket.....	N/A	N/A	___
___	N75057	Small Refrigerator	274.90	357.35	___
___	N75052	Black Table Lamp	65.00	84.50	___
___	N74082	File Cabinet/2 Drawer	81.25	105.65	___
___	N74081	File Cabinet/4 Drawer	107.90	140.25	___
___	10201484	Bulletin Board	126.25	164.15	___

Special Drap

Black Blue Burgundy Dark Green Gold
 Gray Plum Red Teal White

___	12103	Special Drap 3'H (per ft.)	10.00	13.00	___
___	12108	Special Drap 8'H (per ft.) ...	12.15	15.80	___

TOTAL COST		
___	+	___ = ___
Sub-Total	8.125% Tax	Total Cost

FREEMAN furnishing essentials

F R E E M A N

3323 IH-35 North Ste 120
 San Antonio, Texas 78219
 Ph: 210/227-0341 • Fax 469/621-5611

**DISCOUNT PRICE
 DEADLINE DATE
 JANUARY 11, 2012**

METHOD OF PAYMENT MUST
 ACCOMPANY YOUR ORDER

NAME OF SHOW: **SAN ANTONIO BOAT AND RV SHOW / JANUARY 26-29, 2012**

COMPANY NAME: _____ BOOTH # _____

ADDRESS: _____ BOOTH SIZE: _____
(STREET) (P.O. BOX)

PHONE #: _____ EXTENSION: _____ FAX NUMBER: _____
(CITY) (STATE) (ZIP)

ORDERED BY: _____ PRINT NAME: _____ DATE: _____

SAVE TIME & MONEY WITH A BOOTH FURNITURE PACKAGE

This package contains those items most often ordered to create the proper selling environment in your exhibit space. Furthermore, these furnishings will be waiting for you in your booth when you arrive, saving you delays in setting up your exhibit. Save time and money by ordering NOW. No substitutions please.

ITEM #	PART #	DESCRIPTION	ADVANCE RATE	STANDARD RATE
11-80-60		Booth Package.....	\$165.00	\$175.00

This special package for each 10' x 10' booth includes:

- 1 - 9' x 10' Blue Carpet
- 1 - 6' X 30" W X 30" H White Skirted Table
- 1 - Wastebasket
- 2 - Side Chairs

(Price includes delivery to and removal from your booth space.)

FURNITURE PACKAGE

Part #	Description	Quantity	Unit Price	Total Price
			Sub-Total	
			8.125% Tax	
			Total	

QUICK TIPS FOR EASY EXHIBITING

- If you have any questions or need assistance with any items not listed, please call and ask for our Exhibitor Sales Representative.

FREEMAN booth furniture package



digital graphics



creating visual excitement

Quality graphics contribute significantly to the impact of your exhibit. Vivid colors and sharp images attract attention, build traffic, and communicate messages more effectively. Freeman has invested in the latest printing technology and has the skills to provide you with the finest digital graphic reproduction available.

state-of-the-art capabilities

Freeman can provide four-color, photo-quality, high-resolution digital printing in virtually any size for banners, signage, exhibit graphics, and more. Each Freeman location has stand-alone printing capabilities, and all are supported by the Corporate Graphics Center for special requirements. Last minute repairs and replacements are handled efficiently through our nationwide resources.

superior quality control

Electronic file transfer, in-house printing, and company-wide standardization of procedures allow us to control quality, cost and scheduling for our customers on a nationwide basis.

depth of resources

- VUTEK™ and Salsa printers provide large format, four-color, high-resolution digital printing of single and double-sided banners up to 10' wide and virtually any size with seams.
- Encad printers provide digital processing of banners up to 5' wide without seams.
- All Freeman operations use the same printers, software, ink, adhesives, and laminates for continuity.
- Seaming, grommeting, lamination, and mounting are handled in-house.
- A variety of fabrics are available, including nylon, vinyl, and mesh materials.
- Computer-aided graphic design for your assistance.

freeman specializes in the digital graphic reproduction and installation of:

- Suspended banners
- Logo reproduction
- Accent graphic photo panels
- Backlit displays and murals
- Large format signage and banners
- four-color carpet image printing

questions?

Call customer service at the number listed on Quick Facts. For fast, easy ordering, go to www.myfreemanonline.com.

F R E E M A N

3323 I H 35 North, Ste 120
 San Antonio, TX 78219
 (210) 227-0341 Fax: (469) 621-5611
 FreemanSanAntonioES@freemanco.com

DISCOUNT PRICE
 DEADLINE DATE
 JANUARY 11, 2012

INCLUDE THE FREEMAN METHOD OF
 PAYMENT FORM WITH YOUR ORDER

NAME OF SHOW: **SAN ANTONIO BOAT AND RV SHOW / JANUARY 26-29, 2012**

COMPANY NAME: _____ BOOTH #: _____ BOOTH SIZE: X _____

CONTACT NAME: _____ PHONE #: _____

E-MAIL ADDRESS: _____

For Assistance, please call (210) 227-0341 to speak with one of our experts.

For fast, easy ordering, go to www.freemanco.com/store

GRAPHICS & SIGNS

To order your graphics, complete this order form and attach your sign copy or electronic file.

Please see artwork guidelines for electronic files on page 2 of this form.

Note: All graphics are subject to a 100% Cancellation Charge.

DIGITAL GRAPHICS

Freeman has the capabilities to provide you with the finest digital graphic reproduction available. Capabilities include four-color, photo-quality, high-resolution digital printing virtually any size for banners, signage, exhibit graphics and more.

_____ L X _____ W = _____ sq.ft.

sq. ft. _____ \$ 16.00 per sq. ft. discount price
 x or = \$ _____
 \$ 22.15 per sq. ft. standard price

- Minimum order per graphic 9 sq. ft. (1296 sq. in.)
- Double sq. ft. for double-sided graphics
- Round sq. ft. to next whole increment
- File conversion, retouching, cloning or color correcting may incur additional labor charges. (See reverse side for graphic guidelines.)

LARGE DIGITAL GRAPHICS

Please call an Exhibitor Sales Specialist for price quotes on graphics over 80 sq. ft.

File Information:

Electronic File Name _____

Application _____

PMS Colors _____

Backing Material:

Foamcore Masonite

PVC Plexi

Gatorfoam Other

Vertical Horizontal Use Your Judgment For Sign Layout

Special Instructions

STANDARD SIZES

CHOOSE YOUR SIZE:

QTY.	Discount Price	Standard Price	TOTAL
7" x 11" @ _____	32.90	49.35 =	_____
7" x 22" @ _____	38.10	57.15 =	_____
7" x 44" @ _____	41.95	62.95 =	_____
9" x 44" @ _____	53.80	80.70 =	_____
11" x 14" @ _____	45.00	67.50 =	_____
14" x 22" @ _____	50.00	75.00 =	_____
14" x 44" @ _____	85.40	128.10 =	_____
22" x 28" @ _____	78.00	106.00 =	_____
28" x 44" @ _____	117.00	150.00 =	_____
20" x 60" @ _____	152.35	228.55 =	_____

(white only)

Note: File conversion, retouching, cloning or color may incur additional labor charges. (See reverse side for graphic guidelines.)

INDICATE YOUR SIGN COPY HERE:

* Please feel free to attach additional sign copy on separate page.

Vertical Horizontal Use Your Judgment For Sign Layout

Background Color: _____

Lettering Color: _____

TOTAL COST		
Sub-Total	+	8.125 % Tax = Total Cost

graphics & signs
 FREEMAN

CUSTOMER GUIDELINES FOR SUBMITTING GRAPHICS ARTWORK

Our desire is to provide you with the best possible quality graphics for your event or exhibit. You can help us in that effort by providing digital art files using the following guidelines. If you are sending us completed, print-ready files, please pass the following information on to your graphics designer. Two overall considerations for submitting acceptable artwork involves proper resolution or size of the file to avoid poor quality images, and proper color matching information and proofs to ensure accurate color reproduction.

PLEASE PROVIDE THE FOLLOWING WHEN SUBMITTING ART

Minimum requirements for original artwork, such as logos, when Freeman is providing design and layout:

- 300 dpi resolution at a size of 8 x 10 inches (higher resolution files will result in improved final product)

Minimum requirements for final artwork that Freeman will reproduce exactly as provided:

- 100 dpi resolution at full size of actual finished product

Minimum requirements for both:

- All related PMS and/or CMYK color codes (if submitting CMYK values, please supply accurate color swatches.)
- Accurate color proof print of artwork
- Contact name, phone number and e-mail address of art creator if applicable
- If submitting a "vector" file, include all fonts, or convert fonts to outlines or paths

ACCEPTABLE FILE SOFTWARE FORMATS

We are capable of working with both PC and MAC based software, and can accept art created with the following software programs (listed in order of preference):

- ADOBE—Illustrator, InDesign, and Photoshop
- COREL DRAW
- QUARK XPRESS

Files should always be saved in their native format.

ACCEPTABLE FILE TYPES

Files that Freeman **can use** in order of preference, include:

- EPS and AI (especially when submitting logos)
- TIF (especially when submitting photos)
- JPG (provided resolution is high enough for photo images; not recommended for logos)

File types that Freeman **cannot use** to reproduce high quality graphics include:

- GIF files
- Microsoft Office software files such as Word (.doc), or PowerPoint (.ppt) file types
- Self-extracting files, such as EXE or SEA files

WAYS TO SEND ARTWORK

• Artwork files that are of acceptable resolution as listed above will typically be too large to send via e-mail. Files may be saved and sent via overnight delivery on either a CD-ROM or a DVD, along with the hard-printed proof copy. (Floppy disks and zip drives are not a good option for sending large graphics files.)

• Files may also be posted to Freeman's FTP site. You may get the password and other needed information from your Freeman service representative in order to post files. However, a hard copy proof and backup of the files on CD-Rom/DVD are required and must be sent via overnight delivery in addition to posting the electronic files. Please call (210) 227-0341 for assistance.



carpet

When it comes to making your exhibit stand out on the show floor, we have you covered. Freeman offers superior carpet options designed to fit the requirements of your exhibit space. With classic, custom or prestige carpet available to suit your needs. Freeman has endless carpet options to choose from. Here are some facts about our first-rate carpet services:

- Freeman uses only colorfast carpet, making it a consistent, matching shade every time
- Freeman employees supervise the laying of your carpet
- To ensure quality, we thoroughly inspect each refurbished carpet
- All of our carpet padding has recently been upgraded to above industry standards

Freeman Prestige Carpet combines plush comfort with durable soil and stain resistance, perfect for high-traffic areas. Six popular colors are available in a luxurious 40-ounce weight, and all 15 designer colors are available in a 28-ounce weight. Freeman Prestige Carpet packages include brand-new, 10-foot-wide carpet, delivery, visqueen covering, installation, carpet tape, carpet removal and all carpet material handling fees. Price includes environmentally friendly disposal of carpet after usage. Foam padding is available for a minimal fee. If you have a large order, call to find out about our extra discounts.

prestige CARPET

custom options

Prestige Carpets can also be customized to fit your exhibit needs with unique logos, patterns and borders. Call the phone number on Quick Facts for assistance.



white*



sea breeze*



gray pearl*



charcoal*



black*



navy*



wedgewood



toast



cream



baywater



pine



cabernet



raspberry



peach



cardinal

*Colors available in both 28 oz. and 40 oz.

Actual colors may vary slightly.

questions?

Call customer service at the number listed on Quick Facts. For fast, easy ordering, visit us at www.myfreemanonline.com.

classic CARPET

custom cut

Freeman Classic Carpet is available in a range of colors and includes delivery, visqueen covering, installation, carpet tape, carpet removal and all carpet material handling fees. Foam padding is available for a minimal fee. If you have a large order, call to find out about our extra discounts.

standard cut

Our Classic Carpet comes in a variety of sizes: 9' x 10', 9' x 20', 9' x 30', 9' x 40' and larger. Prices include delivery, installation, carpet tape, carpet removal and all carpet material handling fees. Foam padding and visqueen covering are available for a small surcharge. As always, there are no hidden fees.



gray



tuxedo



blue



black



red



plum



green



burgundy

Actual colors may vary slightly.

questions?

Call customer service at the number listed on Quick Facts. For fast, easy ordering, visit us at www.myfreemanonline.com.

F R E E M A N

FREEMAN

3323 I H 35 North, Ste 120
 San Antonio, TX 78219
 (210) 227-0341 Fax: (469) 621-5611
 FreemanSanAntonioES@freemanco.com

DISCOUNT PRICE
 DEADLINE DATE
 JANUARY 11, 2012

INCLUDE THE FREEMAN METHOD OF
 PAYMENT FORM WITH YOUR ORDER

NAME OF SHOW: **SAN ANTONIO BOAT AND RV SHOW / JANUARY 26-29, 2012**

COMPANY NAME: _____ BOOTH #: _____ BOOTH SIZE: _____ X

CONTACT NAME: _____ PHONE #: _____

E-MAIL ADDRESS: _____

For Assistance, please call (210) 227-0341 to speak with one of our experts.

- For FREE samples or a quote on **orders over 1200 sq. ft.** please call our Exhibitor Sales Department at (210) 227-0341.
- **No MATERIAL HANDLING charges apply.** Rental prices are for the duration of the show and include delivery to and removal from your booth space.
- **Orders received after the deadline or without payment will be charged the Standard Price and are subject to availability.** Prestige and Custom Cut Classic Carpet are subject to a 100% Cancellation Charge.

For fast, easy ordering, go to www.freemanco.com/store

PRESTIGE CARPET - includes plastic covering, delivery, material handling, installation and removal

- **Guaranteed new, high quality carpet available in a variety of designer colors.**

CHOOSE YOUR CARPET COLOR - 40 oz. Carpet:

- Black Charcoal Gray Pearl Navy Sea Breeze White

40 oz. Carpet Rental - Price per sq. ft. (100 sq. ft. minimum)		Discount	Standard	Total
1 - 700 sq. ft.	Booth Size: _____ x _____ = _____ sq. ft. @	\$ 3.55	\$ 4.60	_____
701 - 1200 sq. ft.	Booth Size: _____ x _____ = _____ sq. ft. @	\$ 3.20	\$ 4.15	_____

CHOOSE YOUR CARPET COLOR - 28 oz. Carpet:

- Baywater Cardinal Gray Pearl Pine Toast
 Black Charcoal Navy Raspberry Wedgewood
 Cabernet Cream Peach Sea Breeze White

28 oz. Carpet Rental - Price per sq. ft. (100 sq. ft. minimum)		Discount	Standard	Total
1 - 700 sq. ft.	Booth Size: _____ x _____ = _____ sq. ft. @	\$ 3.00	\$ 3.90	_____
701 - 1200 sq. ft.	Booth Size: _____ x _____ = _____ sq. ft. @	\$ 2.50	\$ 3.25	_____

CUSTOM CUT CLASSIC CARPET - includes plastic covering, delivery, material handling, installation and removal

- Our Custom Cut Classic Carpeting is available in custom cut sizes, and in a variety of standard colors.

CHOOSE YOUR CARPET COLOR:

- Black Blue Burgundy Gray Green Plum Red Teal Tuxedo

Rental - Price per square foot (100 sq. ft. minimum)

16 oz. Carpet Rental		Discount	Standard	Total
Per sq. ft.	Booth Size: _____ x _____ = _____ sq. ft. @	\$ 3.75	\$ 4.85	_____

CLASSIC CARPET - includes delivery, material handling, installation and removal

- Our 16 oz. Classic Carpeting is available in a variety of standard colors in the following standard sizes.

CHOOSE YOUR CARPET COLOR:

- Black Blue Burgundy Gray Green Plum Red Teal Tuxedo

Qty	Description	Discount	Standard	Total
_____	9' x 10' Classic Carpet	\$ 132.25	\$ 164.25	_____
_____	9' x 20' Classic Carpet	\$ 237.75	\$ 295.75	_____
_____	9' x 30' Classic Carpet	\$ 343.00	\$ 427.50	_____
_____	9' x 40' Classic Carpet	\$ 449.25	\$ 560.50	_____

CARPET PADDING AND PLASTIC COVERING - includes delivery, material handling, installation and removal

- Price is per sq. ft.

Qty	Description	Discount	Standard	Total
_____	Carpet Padding - 1/2" (90 - 700 sq. ft.).....	\$.75	\$ 1.00	_____
_____	Carpet Padding - 1/2" (Over 700 sq. ft.).....	\$.65	\$.85	_____
_____	Plastic Covering	\$.55	\$.70	_____

TOTAL COST		
_____	+	_____
Sub- Total		8.125% Tax
_____	=	_____
		Total Cost

****All utility lines must be installed before carpet installation. Utilities should be ordered in advance.****

F R E E M A N

3323 I H 35 North, Ste 120
 San Antonio, TX 78219
 (210) 227-0341 Fax: (469) 621-5611
 FreemanSanAntonioES@freemanco.com

INCLUDE THE FREEMAN METHOD OF
 PAYMENT FORM WITH YOUR ORDER

NAME OF SHOW: **SAN ANTONIO BOAT AND RV SHOW / JANUARY 26-29, 2012**

COMPANY NAME: _____ BOOTH #: _____ BOOTH SIZE: _____ X

CONTACT NAME : _____ PHONE #: _____

E-MAIL ADDRESS : _____

For Assistance, please call (210) 227-0341 to speak with one of our experts.

For fast, easy ordering, go to www.freemanco.com/store

CLEANING SERVICES

- Prices are based on total square footage of booth regardless of area to be cleaned.
- 100 sq. ft. minimum.
- Our exclusive cleaning contract for this show will not permit other service contractors, including exhibitor appointed contractors to provide this service.
- **Show Site Prices will apply to all cleaning orders placed at show site.**

VACUUMING (per sq. ft. - 100 sq. ft. minimum)

Qty (sq. ft.)	Part #	Description	Advance Price	Show Site Price	Total
_____	610100	Booth Vacuuming - One Time34	N/A	_____
_____	610200	Booth Vacuuming - 2 Days64	N/A	_____
_____	610300	Booth Vacuuming - 3 Days94	N/A	_____
_____	610400	Booth Vacuuming - 4 Days	1.28	N/A	_____

• Includes emptying of your booth's wastebasket(s) at the time of vacuuming.

SHAMPOOING (per sq ft - 100 sq ft minimum)

Qty (sq. ft.)	Part #	Description	Advance Price	Show Site Price	Total
_____	630100	Shampoo Carpet - One Time75	N/A	_____
_____	630200	Shampoo Carpet - 2 Days	N/A	N/A	_____
_____	630300	Shampoo Carpet - 3 Days	N/A	N/A	_____

PORTER SERVICE (per day)

Qty (# days)	Part #	Description	Advance Price	Show Site Price	Total
_____	620500	Exhibit Area / Under 500 sq.ft.	60.00	N/A	_____
_____	6201500	Exhibit Area / 501 - 1,500 sq. ft.	70.00	N/A	_____
_____	6202500	Exhibit Area / 1,501 - 2,500 sq. ft.	80.00	N/A	_____
_____	6203500	Exhibit Area / Over 2,500 sq.ft.....	Call for Quote		

TOTAL COST

_____	+	_____	=	_____
Sub-Total		8.125 %Tax		Total Cost

FREEMAN cleaning

F R E E M A N

3323 IH 35 North, Suite 120
 San Antonio, Texas 78219
 (210) 227-0341 • Fax: (469) 621-5611
 FreemanSanAntonioES@freemanco.com

**DISCOUNT PRICE
 DEADLINE DATE
 JANUARY 11, 2012**

**INCLUDE THE FREEMAN METHOD OF
 PAYMENT FORM WITH YOUR ORDER**

NAME OF SHOW: **SAN ANTONIO BOAT AND RV SHOW / JANUARY 26-29, 2012**

COMPANY NAME _____ BOOTH #: _____

CONTACT NAME: _____ PHONE #: _____

E-MAIL ADDRESS _____

For Assistance, please call 210-227-0341 to speak with one of our experts.

We will install your carpet, tape all necessary seams and roll-up at the close of the show. This is a labor service and does not include the carpet rental. The pricing below will apply provided the following requirements are met.

- A carpet layout plan is provided to Freeman AND carpet is labeled and numbered correctly.
- Carpet runs (lengths) of 50' (feet) or more are provided.

If these requirements cannot be met, standard hourly labor will apply and can be ordered on our Installation & Dismantle order form included in this packet. If you desire to rent our carpet, please refer to the Carpet order form included in this packet.

Installation - Price based on square footage

Installation - Price per sqft (100 sqft minimum)

9,000 sqft & up	Booth Size: _____ x _____ = _____ sq.ft. @	\$ 0.12	\$ _____
5,000 - 8,999 sqft	Booth Size: _____ x _____ = _____ sq.ft. @	\$ 0.14	\$ _____
2,500 - 4,999 sqft	Booth Size: _____ x _____ = _____ sq.ft. @	\$ 0.16	\$ _____

Cleaning - Price based on square footage
 THIS OFFER IS ONLY AVAILABLE FOR BOOTHS 5,000 SQFT OR LARGER.
 All other booth sizes please refer to the Carpet order form included in this packet.

Cleaning - Price per sqft (100 sqft minimum)

9,000 sqft & up	Booth Size: _____ x _____ = _____ sq.ft. @	\$ 0.04	\$ _____
5,000 - 8,999 sqft	Booth Size: _____ x _____ = _____ sq.ft. @	\$ 0.05	\$ _____

If this service is required, please contact Exhibitor Services at 210-227-0341 for assistance.

TOTAL COST

Sub-Total _____ + Tax (8.125%) _____ = TOTAL _____

****All Utility lines must be installed before carpet installation. Utilities should be ordered in advance.****

FREEMAN bulk carpet installation

SAN ANTONIO, AUSTIN & SOUTH TEXAS AREA

To assist you in planning your show, we would like to provide you with the following information regarding your labor jurisdictions.

LABOR SERVICE

FREEMAN has exclusive labor to assist with your Installation and Dismantling needs as well as Freight Services. Full time employees with Exhibiting Companies may set their own booths without assistance from our labor.

MATERIAL HANDLING

FREEMAN is the exclusive provider of freight services. Full time employees of exhibiting companies may move their own materials to their booth space with 2 wheel dollies ONLY. Vehicles being unloaded must be owned or leased and operated by a full time employee of the exhibiting company. No pallet jacks nor motorized forklifts can be operated by anyone other than the Official Freight Service Company. Hotel Bellmen, Porters, Taxi Drivers, Day Laborers, etc. are not allowed on the show floor and cannot move any materials to and from the exhibitor's booth. FREEMAN will control access to the loading docks in order to provide for a safe and orderly move-in/move-out. Exhibitors wishing to move their own materials in or out of the show will be provided a space in the dock area to load or unload their vehicles on a first come basis.

PLEASE NOTE:

- Please do not tip any employee. Do not give coffee breaks, for union employees have a fifteen minute paid break mid-morning and mid-afternoon. Any attempt by an employee to solicit a gratuity for any service should be reported immediately to Freeman and/or Exhibit Management. Union employees are paid a good wage scale, and tipping is strongly discouraged and is not an accepted policy of any Official Service Supplier.
- If you encounter any difficulty with any laborer, or if you are not satisfied with the work performed, please bring this to the attention of Freeman. Please refrain from voicing complaints directly to craft personnel.
- The person in charge of your exhibit should carefully inspect and sign all work order forms. If there are any questions about any bills, bring the bill to the appropriate Service Desk and discuss it with the person in charge.

F R E E M A N

3323 IH-35 North Ste 120
San Antonio, Texas 78219
Ph: 210/227-0341

PLEASE FAX TO 469-621-5611

DEADLINE DATE

JANUARY 11, 2012

NOTIFICATION OF INTENT to use eac

NAME OF SHOW: **SAN ANTONIO BOAT AND RV SHOW / JANUARY 26-29, 2012**

EXHIBITING COMPANY NAME: _____

BOOTH #: _____

PRINT NAME: _____

BOOTH SIZE: _____ X _____

SIGNATURE: _____

DATE: _____

If your company plans to use a firm which is not the official service contractor as designated by Show Management, please complete this form and mail to the address listed above.

Company Name: _____ Booth No.: _____

Contact at Show: _____

Exhibitor Appointed Contractor: _____

Address of Contractor: _____

Type of Service to be Performed: _____

*Inform your **Exhibitor Appointed Contractor** that they **MUST** send a copy of their General Liability Insurance Certificate no later than **30 days** prior to the first day of exhibitor move-in or they will not be permitted to service your exhibit.*

It is the responsibility of the exhibitor to see that each representative of an Exhibitor Appointed Contractor abides by the official rules and regulations of this event.

This form must be received 30 DAYS PRIOR TO THE FIRST DAY OF EXHIBITOR MOVE-IN.

F R E E M A N

3323 IH 35 North, Suite 120
 San Antonio, Texas 78219
 (210) 227-0341 • Fax: (469) 621-5611
 FreemanSanAntonioES@freemanco.com

INCLUDE THE FREEMAN METHOD OF
 PAYMENT FORM WITH YOUR ORDER

NAME OF SHOW: **SAN ANTONIO BOAT AND RV SHOW / JANUARY 26-29, 2012**

COMPANY NAME _____ BOOTH #: _____

CONTACT NAME: _____ PHONE #: _____

E-MAIL ADDRESS _____

For Assistance, please call 210-227-0341 to speak with one of our experts.

For fast, easy ordering, go to www.myfreemanonline.com

DISPLAY LABOR (One Hour Minimum per Worker)

Description	Advance Price	Show Site Price
Straight Time- 8:00 A.M. to 5:00 P.M. Monday through Friday	\$ 50.00	\$ 62.50
Overtime- 6:00 A.M. to 8:00 A.M. and 5:00 P.M. to 12:00 Midnight Monday through Friday ALL DAY SATURDAY, SUNDAY & HOLIDAYS	\$ 75.00	\$93.75

- Show Site prices will apply to all labor orders placed at show site.
- Price is per person/per hour.
- Start time guaranteed only at start of working day.
- One hour minimum per person - labor thereafter is charged in half (1/2) hour increments.
- Labor must be canceled in writing, 24 hours in advance to avoid a one (1) hour cancellation fee per worker.
- When scheduling dismantle labor, be sure to allow sufficient time for empty containers to be returned to your booth.
- Freeman supervised jobs will be completed at our discretion prior to show opening and before the hall must be cleared. **Please include setup plan/photo, special instructions & inbound shipping information with this order.**

INSTALLATION LABOR

- Freeman Supervised Labor - Please complete the reverse side of this form.**
- Installation of your exhibit will be completed at our discretion prior to show opening.
 - The charge for this service is 25% of the total installation labor bill, with a minimum of \$25.00.

Emergency contact: _____ Phone Number: _____

- Exhibitor Supervised Labor (Supervisor must check in at Service Desk to pick up labor)**

Supervisor will be: _____ Phone Number: _____

Date	Start Time	No. of People	Approx. Hrs. per Person	Total Hrs.	Hourly Rate	Estimated Total Cost
_____	_____	_____ x _____	_____ = _____	_____ @ \$ _____	= \$ _____	
_____	_____	_____ x _____	_____ = _____	_____ @ \$ _____	= \$ _____	
_____	_____	_____ x _____	_____ = _____	_____ @ \$ _____	= \$ _____	
Freeman Supervision (25%/\$25.00)						= \$ _____
Tax						= \$ (N/A)
Total Installation						= \$ _____

DISMANTLE LABOR

- Freeman Supervised Labor - Please complete the reverse side of this form.**
- Freeman is not responsible for product or literature that is not properly packed and labeled by exhibitor.
 - The charge for this service is 25% of the total dismantle labor bill, with a minimum of \$25.00.

Emergency contact: _____ Phone Number: _____

- Exhibitor Supervised Labor (Supervisor must check in at Service Desk to pick up labor)**

Supervisor will be: _____ Phone Number: _____

Date	Start Time	No. of People	Approx. Hrs. per Person	Total Hrs.	Hourly Rate	Estimated Total Cost
_____	_____	_____ x _____	_____ = _____	_____ @ \$ _____	= \$ _____	
_____	_____	_____ x _____	_____ = _____	_____ @ \$ _____	= \$ _____	
_____	_____	_____ x _____	_____ = _____	_____ @ \$ _____	= \$ _____	
Freeman Supervision (25%/\$25.00)						= \$ _____
Tax						= \$ (N/A)

Freeman installation & dismantle

NAME OF SHOW: **SAN ANTONIO BOAT AND RV SHOW / JANUARY 26-29, 2012**

COMPANY NAME: _____ BOOTH#: _____

CONTACT NAME: _____ PHONE#: _____

FREEMAN SUPERVISED LABOR

IN ORDER TO BETTER SERVE YOU - PLEASE COMPLETE THE FOLLOWING INFORMATION IF YOUR DISPLAY IS TO BE SET-UP AND/OR DISMANTLED BY FREEMAN I&D AND YOU WILL NOT BE PRESENT TO SUPERVISE THE INSTALLATION AND/OR DISMANTLE.

INBOUND SHIPPING & SET UP INFORMATION

Freight will be shipped to Warehouse _____ Show Site _____ Date Shipped _____

Total No. of: _____ Crates _____ Cartons _____ Fiber Cases _____

Setup Plan/Photo: Attached _____ To Be Sent With Exhibit _____ In Crate No. _____

Carpet: With Exhibit _____ Rented From Freeman _____ Color _____ Size _____

Electrical Placement: _____ Drawing Attached _____ Drawing With Exhibit _____ Electrical Under Carpet _____

Comments: _____

Graphics: With Exhibit _____ Shipped Separately _____

Comments: _____

Special Tools/Hardware Required: _____

OUTBOUND SHIPPING INFORMATION

SHIP TO: _____

METHOD OF SHIPMENT

- Freeman Exhibit Transportation:**
 - Common Carrier
 - Air Freight Next Day 2nd Day Deferred Expedited
- Other (list carrier name & phone number):**
 - Other Common Carrier: _____
 - Other Air Freight: _____
 - Van Line: _____

FREIGHT CHARGES

- Prepaid Collect
- Bill To: _____
- _____
- _____

In the event your selected carrier fails to show on final move-out day, please select one of the following options:

- Reroute via Freeman's choice
- Deliver back to Freeman warehouse at Exhibitor's expense.

PLEASE NOTE: Freeman is not responsible for product or literature that is not properly packed and labeled by exhibitor.

FREEMAN installation & dismantle

FREEMAN

3323 IH 35 North, Suite 120
 San Antonio, Texas 78219
 (210) 227-0341 • Fax: (469) 621-5611
 FreemanSanAntonioES@freemanco.com

INCLUDE THE FREEMAN METHOD OF PAYMENT FORM WITH YOUR ORDER

NAME OF SHOW: **SAN ANTONIO BOAT AND RV SHOW / JANUARY 26-29, 2012**

COMPANY NAME _____ BOOTH #: _____

CONTACT NAME: _____ PHONE #: _____

E-MAIL ADDRESS _____

For Assistance, please call 210-227-0341 to speak with one of our experts.

For fast, easy ordering, go to www.myfreemanonline.com

FORKLIFT / RIGGING EQUIPMENT AND LABOR

Straight Time - 8:00 A.M. to 5:00 P.M. Monday through Friday
Overtime - 6:00 A.M. to 8:00 A.M. and 5:00 P.M. to 12:00 Midnight Monday through Friday
 ALL DAY SATURDAY, SUNDAY & HOLIDAYS

- Show site prices will apply to all labor orders placed at show site
- Start time guaranteed only at start of working day
- One hour minimum - labor thereafter is charged in half (1/2) hour increments
- Supervisor must check in at Service Desk to pick up labor
- When scheduling dismantle labor, be sure to allow sufficient time for empty containers to be returned to your booth

Part#	Description	Advance Price	Show Site Price
FORKLIFT LABOR			
304050	Forklift w/operator - up to 5,000 lbs - ST.....	\$125.00	\$156.25
304051	Forklift w/operator - up to 5,000 lbs - OT.....	\$168.75	\$210.94
3040100	Forklift w/operator - up to 10,000 lbs - ST.....	\$120.00	\$156.00
3140101	Forklift w/operator - up to 10,000 lbs - OT.....	\$157.00	\$204.10
3140150	Forklift w/operator - up to 15,000 lbs - ST.....	\$126.00	\$163.80
3140151	Forklift w/operator - up to 15,000 lbs - OT.....	\$163.00	\$211.90
3140300	Forklift w/operator - up to 30,000 lbs - ST.....	\$148.00	\$192.40
3140301	Forklift w/operator - up to 30,000 lbs - OT.....	\$185.00	\$240.50
3090600	Man Cage for Forklift.....	\$ 29.00	
3090700	Boom for Forklift.....	\$ 29.00	
RIGGING LABOR			
3020200	Rigger Foreman - ST.....	\$ 75.00	\$ 97.50
3020201	Rigger Foreman - OT.....	\$112.00	\$145.60
3020100	Rigger - ST.....	\$ 74.00	\$ 96.20
3020101	Rigger - OT.....	\$111.00	\$144.30
MOBILE UNIT SPOTTING FEE			
257024	Mobile Unit Spotting Fee (Each Way)	\$ 65.00	

INSTALLATION

Part #	Description	Date	Start Time	# of Equip/ Person	Approx Hrs per Person	Total Hours	Hourly Rate	Estimated Total Cost
Describe work to be done: _____							Sub-Total	
_____							Tax	N/A
_____							Total	

DISMANTLE

Part #	Description	Date	Start Time	# of Equip/ Person	Approx Hrs per Person	Total Hours	Hourly Rate	Estimated Total Cost
Describe work to be done: _____							Sub-Total	
_____							Tax	N/A
_____							Total	

FREEMAN forklift / rigging labor

WHAT ARE FREIGHT SERVICES?

As the official service contractor, Freeman is the exclusive provider of freight services. Material handling includes unloading your exhibit material, storing up to 30 days in advance at the warehouse address, delivering to the booth, the handling of empty containers to and from storage, and removing of material from the booth for reloading onto outbound carriers. It should not be confused with the cost to transport your exhibit material to and from the convention or event. You have two options for shipping your advance freight — either to the warehouse or directly to show site.

How do I ship to the warehouse?

- We will accept freight beginning 30 days prior to show move-in.
- To check on your freight arrival, call Exhibitor Services at the location listed on Quick Facts.
- To ensure timely arrival of your materials at show site, freight should arrive by the deadline date listed on Quick Facts. Your freight will still be received after the deadline date, but additional charges will be incurred.
- The warehouse will receive shipments Monday through Friday, except holidays. Refer to Quick Facts for warehouse hours. No appointment is necessary.
- The warehouse will accept crates, cartons, skids, trunks/cases and carpets. Loose or pad-wrapped material must be sent directly to show site.
- All shipments must have a bill of lading or delivery slip indicating the number of pieces, type of merchandise and weight.
- Certified weight tickets must accompany all shipments.
- Warehouse freight will be delivered to the booth prior to exhibitor setup.
- Please call the number located on Quick Facts if you want to ship oversized material that requires special equipment to the warehouse.

How do I ship to show site?

- Freight will be accepted only during exhibitor move-in. Please refer to Quick Facts for the specific exhibitor move-in dates and times.
- All shipments must have a bill of lading or delivery slip indicating the number of pieces, type of merchandise and weight.
- Certified weight tickets must accompany all shipments.

What about prepaid or collect shipping charges?

- Collect shipments will be returned to the delivery carrier.
- To ensure that your freight does not arrive collect, mark your bill of lading "prepaid."
- "Prepaid" designates that the transportation charges will be paid by the exhibitor or a third party.

How should I label my freight?

- The label should contain the exhibiting company name, the booth number and the name of the event.
- The specific shipping address for either the warehouse or show site is located on Quick Facts.

How do I estimate my Material Handling charges?

- Charges will be based on the weight of your shipment. Each shipment received is considered separately. The shipment weight will be rounded to the next 100 pounds. Each 100 pounds is considered one "cwt." (one hundred weight). All shipments are subject to reweigh.
- On the Order Form, select whether the freight will arrive at the warehouse or be sent directly to show site.
- Next, select the category that best describes your shipment. There are three categories of freight:

Crated: material that is skidded or is in any type of shipping container that can be unloaded at the dock with no additional handling required.

Special Handling: material delivered by the carrier in such a manner that it requires additional handling, such as ground unloading, stacked and constricted space unloading, designated piece unloading, loads mixed with pad-wrapped material, loads failing to maintain shipping integrity, carpet and/or pad-only shipments, and shipments that require additional time, equipment or labor to unload. Federal Express and UPS are included in this category due to their delivery procedures.

Uncrated: material that is shipped loose or pad-wrapped, and/or unskidded machinery without proper lifting bars or hooks.

- Add overtime charges for inbound if material is delivered to the booth during the overtime period stated on Quick Facts. This includes both warehouse and show-site shipments.

- Add overtime charges for outbound if material is loaded onto the outbound carrier during the overtime period stated on Quick Facts.
- Add the late delivery charge listed on the Order Form if the shipment is accepted at the warehouse or at show site after the deadline date listed on Quick Facts.
- The above services, whether used completely or in part, are offered as a package and the charges will be based on the total inbound weight of the shipment.
- Shipments received without receipts or freight bills, such as UPS and Federal Express, will be delivered to the booth without guarantee of piece count or condition.

What happens to my empty containers during the show?

- Pick up "Empty Labels" at the Service Center. Place a label on each container. Labeled containers will be picked up periodically and stored in non-accessible storage during the show.
- At the close of the show, the empty containers will be returned to the booth in random order. Depending on the size of the show, this process may take several hours.

How do I protect my materials after they are delivered to the show or before they are picked up after the show?

- Consistent with trade show industry practices, there may be a lapse of time between the delivery of your shipment(s) to your booth and your arrival. The same is true for the outbound phase of the show — the time between your departure and the actual pick-up of your materials. During these times, your materials will be left unattended. We recommend that you arrange for a representative to stay with your materials or that you hire security services to safeguard your materials.

How do I ship my materials after the close of the show?

- Each shipment must have a completed Material Handling Agreement in order to ship materials from the show. All pieces must be labeled individually.
- To save time, complete and submit the Outbound Shipping Form in advance, or you may contact the Service Center at show site for your shipping documents. The Material Handling Agreement and labels will be processed and available prior to show closing.
- After materials are packed, labeled, and ready to be shipped, the completed Material Handling Agreement must be turned in at the Service Center.
- Call your designated carrier with pick-up information. Please refer to Quick Facts for specific dates and times. In the event your selected carrier fails to show on final move-out day, your shipment will either be rerouted to Freeman's carrier choice or delivered back to the warehouse at exhibitor's expense.
- For your convenience, show-recommended carriers will be on site to handle outbound transportation.

Where do I get a forklift?

- Forklift orders to install or dismantle your booth after materials are delivered may be ordered in advance or at show site. We recommend that you order in advance to avoid additional charges at show site. Refer to the Order Form for available equipment.
- Advance and show-site orders for equipment and labor will be dispatched once a company representative signs the labor order at the Service Center.
- Start time is guaranteed only when equipment is requested for the start of the working day.

Do I need insurance?

- Be sure your materials are insured from the time they leave your firm until they are returned after the show. It is suggested that exhibitors arrange all-risk coverage. This can be done by riders to your existing policies.
- All materials handled by Freeman are subject to the enclosed Terms and Conditions.

Other available services (may not be available in all locations)

- Cranes
- Scissor lifts, condors
- Access storage at show site
- Exhibit transportation services (see enclosed brochure)
- Security storage at show site
- Short-term and long-term warehouse storage
- Local pick-up and delivery
- Priority empty return

F R E E M A N

(800) 995-3579 Toll Free US & Canada
 (817) 607-5100 Local & International

COMPLETE THIS FORM ONLY IF YOU ARE SHIPPING YOUR EXHIBIT MATERIALS BY FREEMAN EXHIBIT TRANSPORTATION

NAME OF SHOW: **SAN ANTONIO BOAT AND RV SHOW / JANUARY 26-29, 2012**

COMPANY NAME: _____ BOOTH #: _____ BOOTH SIZE: _____ X

CONTACT NAME : _____ PHONE #: _____

E-MAIL ADDRESS : _____

For Assistance, please call applicable number listed above to speak with one of our experts.

For fast, easy ordering, go to www.freemanco.com/store

EXHIBIT TRANSPORTATION

TIPS FOR EASY ORDERING

- Credit card information must be on file prior to pick up, as charges will be included on your show services invoice.
- International Exhibitors remember - Shipments originating from countries other than the U.S. must be cleared through customs. Please call for additional information:
 (800) 995-3579 Toll Free US & Canada
 (817) 607-5100 Local & International

COMPLETE THE FOLLOWING ITEMS ON THIS FORM:

PICK UP INFORMATION

Requested Pick Up Date: _____

SHIPPER NAME _____

SHIPPER ADDRESS _____

(City) (State) (Zip)

DESTINATION

- I will be shipping to the **WAREHOUSE**

FREEMAN / Exhibiting Company Name / Booth #

SAN ANTONIO BOAT AND RV SHOW

C/O: FREEMAN
 3323 IH 35 NORTH, STE 126
 SAN ANTONIO, TX 78219

MUST BE DELIVERED BY JANUARY 18, 2012

- I will be shipping to **SHOW SITE**

FREEMAN / Exhibiting Company Name / Booth #

SAN ANTONIO BOAT AND RV SHOW

C/O: FREEMAN
 ALAMODOME
 100 MONTANA ST, STE 101
 SAN ANTONIO, TX 78203

CANNOT BE DELIVERED BEFORE JANUARY 25, 2012

TYPE OF SERVICE

- Next Day Air: Delivery next business day by 5:00 PM
 Second Day Air: Delivery second business day by 5:00 PM
 3-5 Day Service: Delivery within 3 - 5 business days
 Declared Value \$ _____

Air Transportation charges are billed by Dimensional or Actual Weight, whichever is greater.

- Standard Ground: Dependent on distance
 Expedited Ground: Tailored to specific requirements
 Specialized: Pad wrapped, uncrated, truck load

SHIPPING INFORMATION

Items to be shipped

Number of Pieces	Est. Weight
___ Crates (wooden)	_____
___ Cartons (cardboard)	_____
___ Cases/Trunks (fiber) (color _____)	_____
___ Skids/Pallets	_____
___ Carpet (color _____)	_____
___ Other (_____)	_____
___ Total	_____

Size of largest piece: (H) _____ (W) _____ (L) _____

NOTE: Shipments will be weighed and measured prior to delivery.

OUTBOUND SHIPPING

- I would like to schedule outbound Freeman Exhibit Transportation. Please provide me with a Material Handling Agreement at show site for my shipping instructions and signature. So we may print your Outbound Material Handling Agreement and labels, please complete the following information **if different from pick up address:**

Ship to address:

Number of Labels : _____

FAX THIS COMPLETED FORM TO:
 (469) 621-5810

A TRANSPORTATION SPECIALIST
 WILL CALL YOU TO CONFIRM
 RECEIPT OF ORDER AND
 FINALIZE DETAILS.

SHOW # (282113) _____

FREEMAN exhibit transportation

F R E E M A N

3323 IH 35 North, Suite 120
 San Antonio, Texas 78219
 (210) 227-0341 • Fax: (469) 621-5611
 FreemanSanAntonioES@freemanco.com

INCLUDE THE FREEMAN METHOD OF
 PAYMENT FORM WITH YOUR ORDER

NAME OF SHOW: **SAN ANTONIO BOAT AND RV SHOW / JANUARY 26-29, 2012**

COMPANY NAME _____ BOOTH #: _____

CONTACT NAME: _____ PHONE #: _____

E-MAIL ADDRESS _____

For Assistance, please call 210-227-0341 to speak with one of our experts.

Let Freeman OnLine® estimate your material handling charges for you. Log on to www.myfreemanonline.com, select your show and click on "Estimate My Material Handling Costs". From Freeman OnLine you can print extra shipping labels, get tips on how to package your freight and much more.

MATERIAL HANDLING SERVICES

- CRATED:** Material that is skidded or is in any type of shipping container that can be unloaded at the dock with no additional handling required.
- SPECIAL HANDLING:** Material delivered by a carrier in such a manner that it requires additional handling, such as ground unloading, stacked or constricted space unloading, designated piece unloading, shipment integrity, alternate delivery location, loads mixed with pad wrapped material, carpet and/or pad only shipments, no documentation and shipments that require additional time, equipment or labor to unload. **Federal Express, and UPS**, are included in this category due to their delivery procedures. (See definitions on back)
- UNCRATED:** Material that is shipped loose or pad-wrapped, and/or unskidded machinery without proper lifting bars or hooks.
- STRAIGHT TIME:** 8:00 A.M. to 5:00 P.M. Monday through Friday
- OVERTIME:** 5:00 P.M. to 8:00 A.M. Monday through Friday, all day Saturday, Sunday, and Holidays (Overtime will be applied to all freight received at the warehouse and/or show site that must be moved into or out of booth during above listed times.)

Description	Price Per CWT	200 lbs. Minimum
RATE CLASSIFICATIONS:		
Warehouse Shipment (200 lb. minimum)		
Crated or Skidded Shipment.....	\$ 60.00	120.00
Special Handling Shipment.....	\$ 75.00	150.00
Show Site Shipment (200 lb. minimum)		
Crated or Skidded Shipment.....	\$ 60.00	120.00
Special Handling Shipment.....	\$ 75.00	150.00
Small Package - Maximum weight is 30 lbs per shipment*		
Per Shipment	\$ 40.00	

*A small package shipment is a shipment totaling any number of pieces with a combined weight not to exceed 30 lbs that is received on the same day, from the same shipper and delivered by the same carrier.

ADDITIONAL SURCHARGES:

Overtime Charge - Inbound (in addition to above rates)		
Crated or Skidded Shipment.....	\$ 15.00	30.00
Special Handling Shipment.....	\$ 18.75	37.50
Overtime Charge - Outbound (in addition to above rates)		
Crated or Skidded Shipment.....	\$ 15.00	30.00
Special Handling Shipment.....	\$ 18.75	37.50

Description	Weight	CWT	Price per CWT	Estimated Total Cost (200 lb. Min.)
	÷ 100 =			
Surcharges	÷ 100 =			
			8.125% Tax	N/A
			Total	

Tips to Save on Material Handling

- **Consolidate shipments** - when total weight is less than 200 lbs.

For Example:

3 Separate Shipments

60 lbs. charged @ 200 lbs. \$120.00
 52 lbs. charged @ 200 lbs. \$120.00
 65 lbs. charged @ 200 lbs. \$120.00 = \$360.00

1 Consolidated Shipment

3 pieces (1 shipment)
 177 lbs. charged @ 200 lbs = \$120.00

Added benefit - your shipments are less likely to get misplaced if they are packaged together with larger items.

FREEMAN material handling

SPECIAL HANDLING DEFINITIONS

for frequently asked questions and material handling estimator tools, go to www.myfreemanonline.com

Special handling applies to shipments that are loaded by cubic space and/or packed in such a manner as to require additional labor/handling, such as ground unloading, constricted space unloading, designated piece unloading, carpet/pad only shipments or stacked shipments. Also included are shipment integrity, alternate delivery locations, mixed shipments, and shipments without individual bills of lading. Shipments loaded in this manner require additional time, labor, or equipment, to unload, sort and deliver.

What is Ground Loading/Unloading?

Vehicles that are not dock height, preventing the use of loading docks, such as U-hauls, flat bed trailers, double drop trailers, company vehicles with trailers that are not dock level, etc.

What is Constricted Space Loading/Unloading?

Trailer loaded "high and tight" shipments that are not easily accessible. Freight is loaded to full capacity of trailer – top to bottom, side to side. One example of this is freight that is loaded down one side of a trailer that must be bypassed to reach targeted freight.

What is Designated Piece Loading/Unloading?

Drivers that require the loading crew to bring multiple pieces of the freight to the rear of the trailer to select the next piece, having to remove freight from the trailer then reload to fit or the trailer must be loaded in a sequence to ensure all items fit.

What are Stacked Shipments?

Shipments loaded in such a manner requiring multiple items to be removed to ground level for delivery to booth. Stacked or "cubed out" shipments, loose items placed on top of crates and/or pallets constitute special handling.

What is Shipment Integrity?

Shipment integrity involves shipments on a carrier that are intermingled, or delivered in such a manner that additional labor is needed to sort through and separate the various shipments on a truck for delivery to our customers.

What is Alternate Delivery Location?

Alternative delivery location refers to shipments that are delivered by a carrier that requires us to deliver some shipments to different levels in the same building, or to other buildings in the same facility.

What are Mixed Shipments?

Mixed shipments are defined as shipments of mixed crated and uncrated goods, where the percentage of uncrated is minimal and does not warrant the full uncrated rate for the shipment, but does require special handling. Freeman defines special handling for mixed loads as having less than 50% of the volume as uncrated.

What does it mean if I have "No Documentation"?

Shipments arrive from a small package carrier (including, among others, Federal Express, UPS, Airborne Express &DHL) without an individual Bill of Lading, requiring additional time, labor and equipment to process.

What about carpet only shipments?

Shipments that consist of carpet and/or carpet padding only require special handling because of additional labor and equipment to unload.

What is the difference between Crated and Uncrated Shipments?

Crated shipments are those that are packed in any type of shipping container that can be unloaded at the dock with no additional handling required. Such containers include crates, fiber cases, cartons, and properly packed skids. An uncrated shipment is material that is shipped loose or pad-wrapped, and/or unskidded without proper lifting bars and hooks.

F R E E M A N

3323 IH-35 North Ste 120
San Antonio, Texas 78219
Ph: 210/227-0341 • Fax 469/621-5611
FreemanSanAntonioES@freemanco.com

METHOD OF PAYMENT MUST
ACCOMPANY YOUR ORDER

NAME OF SHOW: **SAN ANTONIO BOAT AND RV SHOW / JANUARY 26-29, 2012**

EXHIBITING COMPANY NAME: _____ BOOTH #: _____

ADDRESS: _____ BOOTH SIZE: _____ X

PHONE #: _____ EXT.: _____ FAX #: _____

PRINT NAME: _____

SIGNATURE: _____ DATE: _____

CUSTOMER #: _____ OR CHECK BOX IF YOU ARE A NEW FREEMAN CUSTOMER

E-MAIL ADDRESS: _____

Privately Owned Vehicle Cart Service

Rates and Procedures

Understanding that not all of our customers require standard material handling services, we have made accommodations for POVs. Please note that the definition of a POV or privately owned vehicle, is considered to be any vehicle that is primarily designed to transport passengers, not cargo or freight. Examples include pick-ups, passenger vans, taxis, limos, etc.

Cart Rate: \$100.00 per cart (round trip)

Service to include:

- Unloading and delivery of exhibit materials from the dock to booth
- Storage of empty containers during show hours and return of crates and containers at end of show
- Delivery of exhibit materials/containers from your booth to the dock and the loading of materials into vehicles

Exhibitor will need to complete the Method of Payment form and provide a credit card for imprint at the time of service.

Exhibitors who require this service must check in at the designated Cart Service area.

The above rates and procedures apply ***ONLY*** to passenger size vehicles. ***NO*** trucks or commercial vehicles will be unloaded at the rates. See the enclosed Material Handling Order Form for material handling rates for truck and commercial carriers. Freeman personnel will determine what constitutes a cartload.

FREEMAN PRIVATELY OWNED VEHICLE **CART SERVICE**

F R E E M A N

F R E E M A N

R U S H

R U S H

DO NOT DELAY

DO NOT DELAY

MUST DELIVER BY JANUARY 18, 2012

MUST DELIVER BY JANUARY 18, 2012

TO: _____
EXHIBITOR NAME

TO: _____
EXHIBITOR NAME

C/O: FREEMAN
3323 IH 35 NORTH
STE 126
SAN ANTONIO, TX 78219

C/O: FREEMAN
3323 IH 35 NORTH
STE 126
SAN ANTONIO, TX 78219

WAREHOUSE

WAREHOUSE

EVENT: *SAN ANTONIO BOAT AND RV SHOW*

EVENT: *SAN ANTONIO BOAT AND RV SHOW*

BOOTH NO: _____ NO. _____ OF _____ PCS

BOOTH NO: _____ NO. _____ OF _____ PCS

THE ABOVE LABELS ARE PROVIDED FOR YOUR CONVENIENCE.
PLACE ONE ON EACH PIECE SHIPPED TO ENSURE PROPER DELIVERY.
IF MORE LABELS ARE NEEDED, COPIES ARE ACCEPTABLE.

F R E E M A N

F R E E M A N

R U S H

R U S H

DO NOT DELAY

DO NOT DELAY

CANNOT DELIVER BEFORE JANUARY 25, 2012

CANNOT DELIVER BEFORE JANUARY 25, 2012

TO:

EXHIBITOR NAME

TO:

EXHIBITOR NAME

C/O: FREEMAN

**ALAMODOME
100 MONTANA ST
STE 101
SAN ANTONIO, TX 78203**

C/O: FREEMAN

**ALAMODOME
100 MONTANA ST
STE 101
SAN ANTONIO, TX 78203**

SHOW SITE

SHOW SITE

EVENT: SAN ANTONIO BOAT AND RV SHOW

EVENT: SAN ANTONIO BOAT AND RV SHOW

BOOTH NO: _____ **NO.** _____ **OF** _____ **PCS**

BOOTH NO: _____ **NO.** _____ **OF** _____ **PCS**

THE ABOVE LABELS ARE PROVIDED FOR YOUR CONVENIENCE.
PLACE ONE ON EACH PIECE SHIPPED TO ENSURE PROPER DELIVERY.
IF MORE LABELS ARE NEEDED, COPIES ARE ACCEPTABLE.

F R E E M A N

3323 IH 35 North, Ste 120
 San Antonio, TX 78219
 (210) 227-0341 Fax: (469) 621-5611
 FreemanSanAntonioES@freemanco.com

OUTBOUND MATERIAL HANDLING
 AND SHIPPING LABELS

NAME OF SHOW: **SAN ANTONIO BOAT AND RV SHOW / JANUARY 26-29, 2012**

COMPANY NAME: _____ BOOTH #: _____ BOOTH SIZE: _____ X _____

CONTACT NAME : _____ PHONE #: _____

E-MAIL ADDRESS : _____

For Assistance, please call (210) 227-0341 to speak with one of our experts.

For fast, easy ordering, go to www.freemanco.com/store

EVERY OUTBOUND SHIPMENT WILL REQUIRE A MATERIAL HANDLING AGREEMENT AND LABELS. WE WOULD BE HAPPY TO PREPARE THESE FOR YOU IN ADVANCE AND WILL DELIVER THEM TO YOUR BOOTH AT SHOW SITE TO REVIEW AND SIGN. TO TAKE ADVANTAGE OF THIS SERVICE, PLEASE COMPLETE AND RETURN THIS FORM.

SHIPPING INFORMATION

FROM: SHIPPER/EXHIBITOR NAME: _____

BILLING ADDRESS: _____

CITY: _____ STATE/ PROVINCE: _____ ZIP/ POSTAL CODE: _____

SHIP TO: COMPANY NAME: _____

DELIVERY ADDRESS: _____

CITY: _____ STATE/ PROVINCE: _____ ZIP/ POSTAL CODE: _____

PHONE#: _____ ATTN: _____

SPECIAL INSTRUCTIONS: _____

METHOD OF SHIPMENT

PLEASE CHECK DESIRED METHOD OF SHIPMENT BELOW

FREEMAN EXHIBIT TRANSPORTATION

- 1 Day: Delivery next business day
- 2 Day: Delivery by 5:00 P.M. second business day
- Expedited
- Deferred: Delivery within 3-4 business days
- Standard Ground
- Specialized: Pad wrapped, uncrated, or truckload
- OTHER COMMON CARRIER _____
- OTHER VAN LINE _____
- OTHER AIR FREIGHT _____
 - Next Day
 - 2nd Day
 - Deferred

CARRIER PHONE #: _____

Once your shipment is packed and ready to be picked up, please return the Material Handling Agreement to the Exhibitor Services Center.

Verify the piece count, weight and that a signature is on the Material Handling Agreement prior to shipping out.

SHIPMENTS WITHOUT PAPERWORK TURNED IN WILL BE RETURNED TO OUR WAREHOUSE AT EXHIBITOR'S EXPENSE.

Freeman will make arrangements for all Freeman Exhibit Transportation shipments. Arrangements for pick-up by other carriers is the responsibility of the exhibitor. During exhibitor move-out, when time permits, Freeman will attempt a courtesy phone call to your carrier to confirm the scheduled pick-up.

DESIRED NUMBER OF LABELS: _____

MATERIAL HANDLING

YOU ARE ENTERING A CONTRACT WHICH LIMITS YOUR POSSIBLE RECOVERY IN CASE OF LOSS OR DAMAGE. Acceptance of said terms and conditions will be construed when any of the following conditions are met: This Material Handling Agreement (MHA) is signed; Exhibitor's materials are delivered to Freeman's warehouse or to an event site for which Freeman is the Official Show Contractor; or an order for labor and/or rental equipment is placed by Exhibitor with Freeman.

1. **DEFINITIONS.** For purposes of this Contract, Freeman means Freeman Decorating Services, Inc., and its employees, directors, officers, agents, assigns, affiliated companies, and related entities. The term "Exhibitor" means the Exhibitor, its employees, agents, representatives, any Exhibitor Appointed Contractors ("EAC"), and any persons receiving services from Freeman.

2. **PACKAGING/CRATES AND STORAGE.** Freeman shall not be responsible for damage to loose or uncrated materials, padwrapped or shrink-wrapped materials, glass breakage, concealed damage, carpets in bags or poly, or improperly packed or labeled materials. Freeman shall not be responsible for crates and packaging which are unsuitable for handling, in poor condition, or have prior damage. Crates and packaging should be of a design to adequately protect contents for handling by forklift and similar means. Freeman will not accept any crates or packaging containing hazardous materials. Goods requiring cold storage and those in accessible storage are stored at Exhibitor's own risk. **FREEMAN ASSUMES NO RESPONSIBILITY OR LIABILITY FOR LOSS OR DAMAGE TO GOODS IN COLD STORAGE OR ACCESSIBLE STORAGE.**

3. **EMPTY CONTAINERS.** Empty container labels will be available at the show site service desk. Affixing labels to the containers is the sole responsibility of Exhibitor or its representative. All previous labels must be removed or obliterated. Freeman assumes no responsibility for: error in the above procedures; removal of containers with old empty labels and without Freeman labels; or improper information on empty labels. **FREEMAN WILL NOT BE LIABLE FOR LOSS OR DAMAGE TO CRATES AND CONTAINERS OR THEIR CONTENTS WHILE SAME ARE IN EMPTY CONTAINER STORAGE.**

4. **INBOUND/OUTBOUND SHIPMENTS.** There may be a lapse of time between the delivery of shipment(s) to the booth and the arrival of Exhibitor, or a lapse of time between the completion of packing and the actual pickup of materials from the booths for loading onto a carrier and *during such times, Exhibitor materials will be left unattended.* **FREEMAN IS NOT RESPONSIBLE OR LIABLE FOR ANY LOSS, DAMAGE, THEFT, OR DISAPPEARANCE OF EXHIBITOR'S MATERIALS AFTER THEY HAVE BEEN DELIVERED TO EXHIBITOR'S BOOTH AT SHOW SITE OR BEFORE THEY HAVE BEEN PICKED UP FOR RELOADING AT THE CONCLUSION OF THE EVENT.** Freeman recommends the securing of security services from Facility or Show Management. All MHA's submitted to Freeman by Exhibitor will be checked at the time of pickup from the booth and corrections will be made where discrepancies exist between the quantities of items on any form submitted to Freeman and the actual count of such items in the booth at the time of pickup.

5. **DELIVERY TO THE CARRIER FOR RELOADING.** Freeman assumes no responsibility for loss, damage, theft, or disappearance of Exhibitor's materials after same have been delivered to Exhibitor's appointed carrier, shipper, or agent for transportation after the conclusion of the show. Freeman loads the materials onto the carrier under directions from the carrier or driver of that carrier. Any loading onto the carrier will be understood to be under the exclusive supervision and control of the carrier or driver of that carrier. **FREEMAN ASSUMES NO RESPONSIBILITY FOR LOSS, DAMAGE, THEFT OR DISAPPEARANCE OF EXHIBITOR'S MATERIALS THAT ARISES OUT OF IMPROPERLY LOADED OR LABELED MATERIALS.**

6. **DESIGNATED CARRIERS.** Freeman shall have the authority to change the Exhibitor designated carrier if that carrier does not pick up the shipment(s) at the appointed time. Where no disposition is made by Exhibitor, materials may be taken to a warehouse to await Exhibitor's shipping instructions and Exhibitor agrees to be responsible for charges relating to such rerouting and handling. In no event shall Freeman be responsible for any loss resulting from such rerouting designation.

7. **FORCE MAJEURE.** Freeman's performance hereunder is subject to, and Freeman shall not be responsible for loss, delay, or damage due to, strike, lockouts, work stoppages, natural elements, vandalism, Act of God, civil disturbances, power failures, explosions, acts of terrorism or war, or for any other cause beyond Freeman's reasonable control, nor for ordinary wear and tear in the handling of materials.

8. **CLAIM(S) FOR LOSS.** Exhibitor agrees that any and all claims for loss or damage must be submitted to Freeman immediately at the show site, and in any case not later than *thirty (30) business days* after the conclusion of the show or exposition. (For purposes of claim reporting, the "conclusion" of the show shall be construed as the time when Exhibitor's materials are delivered to the carrier for transportation from the show site or from Freeman's warehouse). All claims reported after thirty (30) days will be rejected. In no event shall a suit or action be brought against Freeman *more than two (2) years* after the date of loss or damage occurred.

a. **PAYMENT FOR SERVICES MAY NOT BE WITHHELD.** In the event of any dispute between the Exhibitor and Freeman relative to any loss, damage, or claim, Exhibitor shall not be entitled to and shall not withhold payment, or any partial payment, due Freeman for its services as an offset against the amount of any alleged loss or damage. Any claims against Freeman shall be considered a separate transaction and shall be resolved on their own merits.

b. **MAXIMUM RECOVERY.** If found liable for any loss, Freeman's sole and exclusive **MAXIMUM** liability for loss or damage to Exhibitor's materials and Exhibitor's sole and exclusive remedy is limited to \$.50 (USD) per pound per article with a maximum liability of \$100.00 (USD) per item, or \$1,500.00 (USD) per shipment whichever is less. All shipment weights are subject to correction and final charges determined by the actual or re-weighed weight of the shipment.

c. **LIMITATION OF LIABILITY.** IN NO EVENT SHALL FREEMAN BE LIABLE TO THE EXHIBITOR OR TO ANY OTHER PARTY FOR SPECIAL, COLLATERAL, EXEMPLARY, INDIRECT, INCIDENTAL, OR CONSEQUENTIAL DAMAGES, WHETHER SUCH DAMAGES OCCUR EITHER PRIOR OR SUBSEQUENT TO, OR ARE ALLEGED AS A RESULT OF, TORTIOUS CONDUCT, FAILURE OF THE EQUIPMENT OR SERVICES OF FREEMAN OR BREACH OF ANY OF THE PROVISIONS OF THIS CONTRACT, REGARDLESS OF THE FORM OF ACTION, WHETHER IN CONTRACT OR IN TORT, INCLUDING STRICT LIABILITY AND NEGLIGENCE, EVEN IF FREEMAN HAS BEEN ADVISED OR HAS NOTICE OF THE POSSIBILITY OF SUCH DAMAGES. SUCH EXCLUDED DAMAGES INCLUDE BUT ARE NOT LIMITED TO LOST PROFITS, LOSS OF USE, AND INTERRUPTION OF BUSINESS OR OTHER CONSEQUENTIAL OR INDIRECT ECONOMIC LOSSES.

9. **DECLARED VALUE.** Declarations of Declared Value are between the Exhibitor and the selected Carrier ONLY, and are in no way an extension of Freeman's maximum liability stated herein. Freeman will use commercially reasonable efforts to transmit the Declared Value instructions to the selected Carrier; however, **FREEMAN WILL NOT BE LIABLE FOR ANY CLAIM ARISING FROM THE TRANSMITTAL OF, OR FAILURE TO TRANSMIT, DECLARED VALUE INSTRUCTIONS TO THE CARRIER NOR FOR FAILURE OF THE CARRIER TO UPHOLD THE DECLARED VALUE OR ANY OTHER TERM OF CARRIAGE.**

10. **JURISDICTION / VENUE.** THIS CONTRACT SHALL BE CONSTRUED UNDER THE LAWS OF THE STATE OF TEXAS WITHOUT GIVING EFFECT TO ITS CONFLICT OF LAWS RULES. EXCLUSIVE VENUE FOR ALL DISPUTES ARISING OUT OF OR RELATING TO THIS CONTRACT SHALL RESIDE IN A COURT OF COMPETENT JURISDICITON IN DALLAS COUNTY, TEXAS.

11. **INDEMNIFICATION.** Exhibitor agrees to indemnify and forever hold harmless Freeman and its employees, directors, officers, and agents from and against any and all demands, claims, causes of action, fines, penalties, damages (including consequential), liabilities, judgments, and expenses (including but not limited to reasonable attorneys' fees and investigation costs) arising out or contributed to by Exhibitor's negligent supervision of any labor secured through Freeman; Exhibitor's negligence, willful misconduct, or deliberate act, or the negligence, willful misconduct, or deliberate act of Exhibitor's employees, agents, representatives, customers, invitees and/or any Exhibitor Appointed Contractors (EAC) at the show or exposition to which this Contract relates, including but not limited to the misuse, improper use, unauthorized alteration, or negligent handling of Freeman's equipment; Exhibitor's violation of Federal, State, County or Local ordinances; and/or Exhibitor's violation of Show Regulations and/or Rules as published and set forth by Facility and/or Show Management.

12. **LIEN.** Exhibitor grants Freeman a security interest in and a lien on all of Exhibitor's goods (including without limitation all equipment) that is from time to time in the possession of Freeman and all the proceeds thereof, including without limitation insurance proceeds (the "Collateral"), to secure the prompt and full payment and performance of all Exhibitor's indebtedness for monies paid, by Freeman on its behalf, services performed, materials and/or labor from time to time provided by Freeman to or for the benefit of Exhibitor ("Obligations"). Freeman shall have all the rights and remedies of a secured party under the Uniform Commercial Code, as may be amended from time to time ("UCC"), and any notice that Freeman is required to give under the UCC of a time and place of a public sale or the time after which any private sale or other intended disposition of any Collateral is to be made shall be deemed to constitute reasonable notice if such notice is mailed by registered or certified mail at least five (5) days prior to such action. Freeman may hold and not deliver any of the Collateral to Exhibitor for so long as there are any Obligations that remain unpaid or unsatisfied.

13. **WAIVER & RELEASE.** Exhibitor, as a material part of the consideration to Freeman for material handling services, waives and releases all claims against Freeman with respect to all matters for which Freeman has disclaimed liability pursuant to the provisions of this Contract.

14. **DRIVER LIABILITY WAIVER.** IN CONSIDERATION OF FREEMAN PERMITTING ENTRANCE TO THE PREMISES, YOU, YOUR EMPLOYER, THE OWNER OF THE TRUCK AND/OR EQUIPMENT THAT YOU ARE OPERATING (TRUCKOWNER) AND YOU AS AGENT OF YOUR EMPLOYER AND THE TRUCKOWNER, HEREBY ASSUME ALL RISK OF INJURY OR HARM TO YOURSELF AND OTHERS AND DAMAGE TO YOUR PROPERTY AND PROPERTY BELONGING TO YOUR EMPLOYER OR OTHERS ARISING FROM YOUR ACTIVITIES WHILE BEING PERMITTED TO ENTER THE PREMISES. YOU AGREE TO ENTER AT YOUR OWN RISK. YOU HAVE FULL KNOWLEDGE OF ANY RISK INVOLVED IN THIS ACTIVITY. YOU RECOGNIZE THE HAZARDS AND ARE AWARE OF ALL THE RULES FOR SAFE OPERATION. YOUR EMPLOYER, THE TRUCKOWNER, AND YOU AGREE TO INDEMNIFY AND HOLD HARMLESS FREEMAN, ITS EMPLOYEES, OFFICERS, DIRECTORS, AGENTS, ASSIGNS, AFFILIATED COMPANIES AND RELATED ENTITIES, AGAINST ANY AND ALL LIABILITY, ACTIONS, CLAIMS, AND DAMAGES OF ANY KIND WHATSOEVER ARISING FROM YOUR ACTIVITIES WHILE BEING PERMITTED TO ENTER THE PREMISE.

PAYMENT & LABOR

YOU ARE ENTERING A CONTRACT WHICH LIMITS YOUR POSSIBLE RECOVERY IN CASE OF LOSS OR DAMAGE. The terms and conditions set forth below become a part of the Contract between FREEMAN and you, the EXHIBITOR. Acceptance of said terms and conditions will be construed when any of the following conditions are met:

- THE METHOD OF PAYMENT FORM IS SIGNED; OR
- AN ORDER FOR LABOR, SERVICES AND/OR RENTAL EQUIPMENT IS PLACED BY EXHIBITOR WITH FREEMAN; OR
- WORK IS PERFORMED ON BEHALF OF EXHIBITOR BY LABOR SECURED THROUGH FREEMAN.

DEFINITIONS

For purposes of this Contract, "FREEMAN" or "The Freeman Companies" means Freeman Decorating Services, Inc., Freeman Decorating Ltd., Freeman Exhibit, AVW-TELAV Inc., Freeman Transportation, Hoffend Xposition, Stage Rigging, Inc., Kerry Technical Services, TFC, Inc., Freeman Electrical Services, and their respective employees, directors, officers, agents, assigns, affiliated companies, and related entities including, but not limited, to any subcontractors FREEMAN may appoint. The term "EXHIBITOR" means the Exhibitor, its employees, agents, representatives, and any Exhibitor Appointed Contractors ("EAC").

PAYMENT TERMS

Full payment, including any applicable tax, is due in advance or at show site. All payments must be in U.S. funds and all checks must be drawn on a U.S. bank. Orders received without advance payment or after the deadline date will incur additional After Deadline charges as indicated on each order form. All materials and equipment are on a rental basis for the duration of the show or event and remain the property of FREEMAN except where specifically identified as a sale. All rentals include delivery, installation, and removal from EXHIBITOR'S booth. In case of cancellation of any orders or services by EXHIBITOR, a one-hour "per person, per hour" charge will be applied for all labor orders that are not canceled in writing at least 24 hours prior to the scheduled start time. If Prestige Carpet, Custom-Cut Carpet, Modular Rental Exhibits and any other custom-order items or services have already been provided at the time of cancellation, fees will remain at 100% of the original charge. If the Show or Event is canceled because of reasons beyond FREEMAN'S control, EXHIBITOR remains responsible for all charges for services and equipment provided up to and including the date of cancellation. FREEMAN will not issue refunds to EXHIBITOR of any payments made before the date of cancellation. It is EXHIBITOR'S responsibility to advise the FREEMAN Service Center Representative of problems with any orders, and to check the EXHIBITOR'S invoice for accuracy prior to the close of the Show or Event. If EXHIBITOR is exempt from payment of sales tax, FREEMAN requires an exemption certificate for the State in which the services are to be used. Resale certificates are not valid unless EXHIBITOR is rebilling these charges to its customers. For International EXHIBITORS, FREEMAN requires 100% prepayment of advance orders, and any order or services placed at show site must be paid at the show. For all others, should there be any pre-approved unpaid balance after the close of the show; terms will be net, due and payable in DALLAS, TEXAS upon receipt of invoice. Effective 30 days after invoice date, any unpaid balance will bear a FINANCE CHARGE at the lesser of the maximum rate allowed by applicable law, or 1.5% per month, which is an ANNUAL PERCENTAGE RATE of 18%, and future orders will be on a prepaid basis only. If any finance charge hereunder exceeds the maximum rate allowed by applicable law, the finance charge shall automatically be reduced to the maximum rate allowed, and any excess finance charge received by FREEMAN shall be either applied to reduce the principal unpaid balance or refunded to the payer. If past due invoices or invoice balances are placed with a collection agency or attorney for collection or suit, EXHIBITOR agrees to pay all legal and collection costs. THESE PAYMENT TERMS AND CONDITIONS SHALL BE GOVERNED BY AND CONSTRUED IN ACCORDANCE WITH THE LAWS OF THE STATE OF TEXAS. In the event of any dispute between the EXHIBITOR and FREEMAN relative to any loss, damage, or claim, such EXHIBITOR shall not be entitled to and shall not withhold payment, or any partial payment, due to FREEMAN for its services, as an offset against the amount of any alleged loss or damage. Any claims against FREEMAN shall be considered a separate transaction, and shall be resolved on its own merits. FREEMAN reserves the right to charge EXHIBITOR for the difference between the EXHIBITOR'S estimate of charges and the actual charges incurred by EXHIBITOR, or for any charges that FREEMAN may be obligated to pay on behalf of EXHIBITOR, including without limitation, any shipping charges. If EXHIBITOR provides a credit card for payment and charges are rejected by the EXHIBITOR'S credit card company for any reason, FREEMAN hereby provides notice that it reserves the right, and EXHIBITOR authorizes FREEMAN, to continue to attempt to secure payment through that credit card for as long as unpaid balances remain on the EXHIBITOR'S account.

LABOR UNDER THE SUPERVISION OF EXHIBITOR

RESPONSIBILITIES:

EXHIBITOR shall be responsible for the performance of labor provided under this option. It is the responsibility of EXHIBITOR to supervise labor secured through FREEMAN in a reasonable manner as to prevent bodily injury and/or property damage and also to direct them to work in a manner that is in compliance with FREEMAN'S Safe Work Rules and/or Federal, State, County and Local ordinances, rules and/or regulations, including but not limited to Show or Facility Management rules and/or regulations. It is the responsibility of EXHIBITOR to check in with the Service Desk to pick up labor, and to return to the Service Desk to release labor when the work is completed.

INDEMNIFICATION:

EXHIBITOR agrees to indemnify, hold harmless, and defend FREEMAN from and against any and all demands, claims, causes of action, fines, penalties, damages, liabilities, judgments, and expenses (including but not limited to reasonable attorneys' fees and investigation costs) for bodily injury, including any injury to FREEMAN employees, and/or property damage arising out of work performed by labor provided by FREEMAN but supervised by EXHIBITOR. Further, the EXHIBITOR'S indemnification of FREEMAN includes any and all violations of Federal, State, County or Local ordinances, "Show Regulations and/or Rules" as published and/or set forth by Facility or Show Management, and/or directing labor provided by FREEMAN to work in a manner that violates any of the above rules, regulations, and/or ordinances.

IMPORTANT

PLEASE REFER TO FREEMAN'S "MATERIAL HANDLING TERMS & CONDITIONS" AS IT RELATES TO MATERIAL HANDLING SERVICES AND TO THE "SERVICE REQUEST & SHIPPING INSTRUCTIONS CONTRACT" AS IT RELATES TO TRANSPORTATION SERVICES. CONTRACT TERMS DEPEND ON THE NATURE OF SERVICES SECURED BY EXHIBITOR THROUGH FREEMAN. TERMS & CONDITIONS MAY VARY FOR EACH TYPE OF SERVICE ORDERED THROUGH FREEMAN.

**SAN ANTONIO FIRE PREVENTION DIVISION
1901 SOUTH ALAMO STREET
SAN ANTONIO, TEXAS 78204**

Revised June 26, 2008

Fire Regulations for Assembly Occupancies

Welcome to San Antonio and let us be one of the first to assist you in making your visit a momentous one. To ensure no last minute changes or unknown charges, please review the following basic outline of our fire code regulations. For more specific information on inquires about possible fees and special approvals, please contact our Special Events Coordinator at (210) 207-3695.

Seating and Booth Arrangements:

1. A floor plan of the layout for public events such as banquets, display exhibits, conventions, concerts or conferences should be submitted to the Fire Marshal for approval at least 21 days prior to the event.
2. All seating arrangements for events will be in accordance with NFPA 101, Life Safety Code, and 2006 International Fire Code, and approved by the Fire Marshal. Any special or unusual arrangements must be approved prior to tickets sales.
3. Exhibit approvals will require a final walk-through by the Fire Marshal prior to event opening. Walk-through conducted after normal work schedule, weekends or holidays will be at the expense of clients unless instructed otherwise.

Booth Construction, Decorations, and Stage Scenery:

4. The decorative and construction materials must be of non-combustibles or flame-resistant material or treated with a solution to make the material flame-resistant.
5. All curtains, drapes, carpet and decorative materials must be non-combustible or flame-resistant material.
6. Any merchandise or material attached to drapes or table skirts must be on non-combustible or flame-resistant material or approved by the Fire Marshal.

Enclosed and Multiple Story Booths:

7. All booths that are completely enclosed must have a smoke detector within the enclosed area that can be heard outside the enclosed area. Multiple story booths must have a smoke detector on the ceiling of the first level.
8. If any enclosed or multiple story booth is over 50 feet in length and holds more than 50 people, it must have at least two marked exits.
9. The travel distance within any booth or exhibit enclosure to an exit access aisle may not be greater than 50 feet.
10. Multiple Story Booth plans must be submitted to the Fire Marshal's office for approval. The plans must specify maximum number of occupants and have a structural engineer's stamp certifying that the platform can bear the maximum occupant load.
11. Multiple story booths must contain at least two 5 pound fire extinguishers, ABC type (2A10BC), with at least one fire extinguisher per floor.

Exits and Exit access and discharge:

12. All exit doors and aisles serving any occupied area of the building must remain unobstructed and unlocked during the hours of operation.
13. No curtain, drapes, or banners shall be hung in such a manner as to cover any exit signs.
14. No decorations, furnishings or other objects may be so placed as to obstruct exits or visibility to the exits. Mirrors may not be placed next to or over exit doors in such a manner as to confuse the direction of the exit.

15. Exit illumination shall be provided and maintained when the building or structure is occupied. Equipment providing emergency power for exits should provide power for not less than ninety (90) minutes and assembly illumination shall be maintained and operable at all times. (2006 IFC, Section 1006)

Open Flames, Compressed Gases, Explosives and Lasers:

16. The following items may not be used without prior approval of the Fire Marshal.
- A. Use, display or storage of LPG (Propane or Butane) (200 lb storage limit)
 - B. Flammable Liquids of Gas
 - C. Barbeque Grills
 - D. Straw, sawdust, or wood shavings
 - E. Welding or cutting equipment for demonstration purposes
 - F. Gas fired appliances for demonstrations or cooking purposes
 - G. Salamander stoves for demonstrations or cooking purposes
 - H. Lit candles and lanterns for demonstration purposes
 - I. No Class B or C Fireworks of any type are allowed without a permit issued by the Fire Marshal's office
 - J. Helium filled balloons are not allowed in the Convention Facilities or Alamodome, as per regulations of the facility.
 - K. Hazers/Fog Machines
17. The use of open flames, burning or smoke-emitting materials as part of an act, display or show is prohibited, unless approved by the Fire Marshal.

Cooking and Cooking Appliances:

18. Cooking is permitted on a limited basis. Small electric cook-tops, ovens and skillets will be allowed for warming. Small 2 ½ - gallon deep-fat fryers are also allowed.
19. Cooking appliances must be placed on non-combustibles surface materials and may not be located within two feet of any combustible materials.
20. All cooking using grease or cooking oils may require splatter shields or lids to protect other employees or the public attending the function from being burned.

Electrical Equipment:

21. Electrical equipment must be installed, operated and maintained in a manner that does not create a hazard to life or property and approved by the City Electrical Inspector.
22. All extension cords extending across an aisle or in the path of travel must be secured/covered to avoid tripping anyone walking across the area.

Vehicles:

23. The following are requirements for displaying vehicles and fuel powered engines. (2006 IFC, sect. 314.4)
This includes all vehicles (e.g.: cars, trucks, semi's, recreational vehicles, boats, motorcycles, atv's, jet ski's, etc).
- A. Not more than ¼ tank or five (5) gallons, whichever is less.
 - B. Fuel tank gas cap must be locked or sealed to prevent mishandling or escape of vapors.
 - C. Battery cables must be disconnected from the ignition system.
 - D. Vehicle operation is limited to brief parade type display specifically approved by the Fire Marshal.
 - E. A floor plan of the display area must be submitted at least 21 days prior to move-in for the Fire Marshal's approved.
 - F. Keys to the vehicle shall remain at the exhibit area, so the vehicle can be removed in case of emergency.
 - G. Show vehicles with LPG tanks shall not be permitted inside the exhibit area without prior approval from the Fire Marshal.
24. No vehicle shall be parked in designated fire lanes.
25. All vehicles not on display are required to be removed from the building prior to the opening of the event.

Tents (over 200 Sq. Ft.) and Canopies (over 400 Sq. Ft.) require a Permit: (2006 IFC, sect. 2403.2)

26. All temporary installation of tents, awnings, canopies and other membrane structures requires prior approval by the Fire Marshal.
27. Plans drawn to scale showing size, height, location, anchoring details and certification of material flame resistance must be submitted to the Fire Marshal's office at least 21 days prior to event for approval.

Hazardous Materials:

28. OSHA requires that all containers of hazardous materials be labeled with the identity of the hazardous material contained therein and appropriate hazard warning.
29. All hazardous materials require Fire Marshal approval.
30. Exhibitors displaying or using hazardous chemicals must have available a Material Safety Data Sheet (MSDS) in case of spill or leakage.

General Regulations:

31. The use of all gas fire heating units; either portable or stationary shall meet the approval of the City Plumbing Inspector and/or the Fire Marshal.
32. Smoking is prohibited in all City of San Antonio buildings. Smoking policy is regulated by City Ordinances #62785, #75573, #85370 and facility regulations.
33. Storage for crates or freight not in use or being displayed must be arranged with the event coordinator and approved by the Fire Marshal.
34. Compressed gases are not allowed in the exhibit area in other than approved containers. Only one-day supply will be allowed in the display area and they must be secured.
35. Whenever compressed gases are used in booth or display area, a "**NO SMOKING**" sign must be posted.
36. If present, fire alarm systems and sprinkler systems must have a current inspection tag. (2006 IFC, sect. 901.6)
37. Every room or space that is an assembly occupancy shall have the occupant load of the room or space posted in a conspicuous place, near the main exit or exit access doorway from the room or space. (2006 IFC, sect. 1004.3)
38. In accordance with the 2006 International Fire Code (Section 403.1) "When, in the opinion of the Chief, it is essential for in a place of assembly or any place where people congregate, because of the number of persons, or the nature of the performance, exhibition, display, contest, or activity, the owner, agent, or lessee shall provide one or more fire watch personnel, as required and approved, to remain on duty during the times such places are open to the public, or when such activity is being conducted."

NOTICE:

If lasers will be used during an event, the technician must be registered with Texas Department of Health (Bureau of Radiation Control). To notify the Texas Department of Health, call (512) 834-6688 ext. 2251 or Fax (512) 834-6690. All pyro displays require the technicians to be licensed and certified by the Texas State Fire Marshal's office (512) 305-7932 or 305-7930. At the expense of the client, one or more Fire Marshals will be employed for these events, unless directed otherwise.